

For Research Use Only

# PIWIL4 Polyclonal antibody

Catalog Number: 12966-1-AP



## Basic Information

### Catalog Number:

12966-1-AP

### Size:

150ul, Concentration: 500 ug/ml by Nanodrop;

### Source:

Rabbit

### Isotype:

IgG

### Immunogen Catalog Number:

AG3613

### GenBank Accession Number:

BC031060

### GeneID (NCBI):

143689

### UNIPROT ID:

Q7Z3Z4

### Full Name:

piwi-like 4 (Drosophila)

### Calculated MW:

852 aa, 97 kDa

### Observed MW:

97 kDa

### Purification Method:

Antigen affinity purification

### Recommended Dilutions:

WB 1:1000-1:6000

## Applications

### Tested Applications:

WB, ELISA

### Species Specificity:

human, mouse, rat

### Positive Controls:

WB : human testis tissue, mouse testis tissue, rat testis tissue

## Background Information

PIWIL4 (Piwi-like RNA-mediated gene silencing 4) is a member of the PIWI protein family and is mainly involved in the development and maintenance of reproductive stem cells. PIWIL4 regulates the biosynthesis and function of piRNA in germ cells by binding to PIWI-interacting RNA (piRNA). Furthermore, PIWIL4 is abnormally expressed in a variety of cancers and plays a promoting role in cancer.

## Storage

### Storage:

Store at -20°C. Stable for one year after shipment.

### Storage Buffer:

PBS with 0.02% sodium azide and 50% glycerol, pH7.3

Aliquoting is unnecessary for -20°C storage

\*\*\* 20ul sizes contain 0.1% BSA

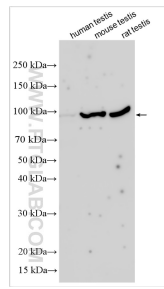
For technical support and original validation data for this product please contact:

T: 1 (888) 4PTGLAB (1-888-478-4522) (toll free in USA), or 1(312) 455-8498 (outside USA)

E: [proteintech@ptglab.com](mailto:proteintech@ptglab.com)  
W: [ptglab.com](http://ptglab.com)

This product is exclusively available under Proteintech Group brand and is not available to purchase from any other manufacturer.

## Selected Validation Data



Various lysates were subjected to SDS PAGE followed by western blot with 12966-1-AP (PIWIL4 antibody) at dilution of 1:3000 incubated at room temperature for 1.5 hours.