

For Research Use Only

EBP Polyclonal antibody

Catalog Number: 12968-1-AP



Basic Information

Catalog Number: 12968-1-AP	GenBank Accession Number: BC001572	Purification Method: Antigen affinity purification
Size: 150ul , Concentration: 300 µg/ml by Nanodrop;	GeneID (NCBI): 10682	Recommended Dilutions: WB 1:500-1:2000 IHC 1:100-1:400
Source: Rabbit	Full Name: emopamil binding protein (sterol isomerase)	
Isotype: IgG	Calculated MW: 26 kDa	
Immunogen Catalog Number: AG3630	Observed MW: 21 kDa	

Applications

Tested Applications:

IHC, WB, ELISA

Species Specificity:

human, mouse, rat

Note-IHC: suggested antigen retrieval with TE buffer pH 9.0; (*) Alternatively, antigen retrieval may be performed with citrate buffer pH 6.0

Positive Controls:

WB : A549 cells, HeLa cells, Jurkat cells, mouse liver tissue

IHC : human cervical cancer tissue,

Background Information

Storage

Storage:

Store at -20°C. Stable for one year after shipment.

Storage Buffer:

PBS with 0.02% sodium azide and 50% glycerol pH 7.3.

Aliquoting is unnecessary for -20°C storage

*** 20ul sizes contain 0.1% BSA

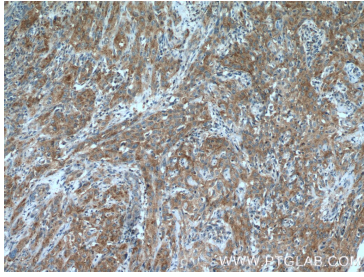
For technical support and original validation data for this product please contact:

T: 1 (888) 4PTGLAB (1-888-478-4522) (toll free in USA), or 1(312) 455-8498 (outside USA)

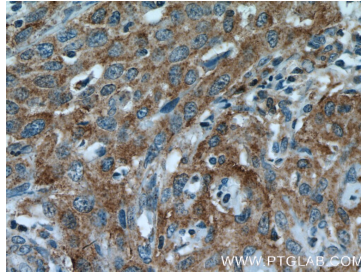
E: proteintech@ptglab.com
W: ptglab.com

This product is exclusively available under Proteintech Group brand and is not available to purchase from any other manufacturer.

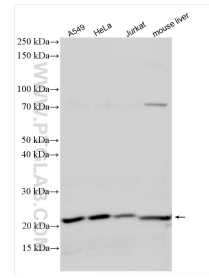
Selected Validation Data



Immunohistochemical analysis of paraffin-embedded human cervical cancer tissue slide using 12968-1-AP (EBP antibody) at dilution of 1:200 (under 10x lens. Heat mediated antigen retrieval with Tris-EDTA buffer (pH 9.0).



Immunohistochemical analysis of paraffin-embedded human cervical cancer tissue slide using 12968-1-AP (EBP antibody) at dilution of 1:200 (under 40x lens. Heat mediated antigen retrieval with Tris-EDTA buffer (pH 9.0).



Various lysates were subjected to SDS PAGE followed by western blot with 12968-1-AP (EBP antibody) at dilution of 1:1000 incubated at room temperature for 1.5 hours.