

For Research Use Only

OPRL1 Polyclonal antibody

Catalog Number: 12970-1-AP

Featured Product

4 Publications



Basic Information

Catalog Number: 12970-1-AP	GenBank Accession Number: BC038433	Purification Method: Antigen affinity purification
Size: 150ul , Concentration: 300 µg/ml by Nanodrop;	GeneID (NCBI): 4987	Recommended Dilutions: WB 1:500-1:2000 IP 0.5-4.0 ug for IP and 1:500-1:1000 for WB
Source: Rabbit	Full Name: opiate receptor-like 1	IHC 1:20-1:200
Isotype: IgG	Calculated MW: 370 aa, 41 kDa	
Immunogen Catalog Number: AG4079	Observed MW: 45 kDa	

Applications

Tested Applications: FC, IHC, IP, WB, ELISA	Positive Controls: WB : HeLa cells, SH-SY5Y cells
Cited Applications: IHC, WB	IP : SH-SY5Y cells,
Species Specificity: human, mouse, rat	IHC : human gliomas tissue, mouse brain tissue
Cited Species: human, rat	

Note-IHC: suggested antigen retrieval with TE buffer pH 9.0; (*) Alternatively, antigen retrieval may be performed with citrate buffer pH 6.0

Background Information

The OPRL1 (opioid related nociceptin receptor 1) is the G-protein coupled receptor activated by the endogenous NC (neuropeptide nociceptin) (PMID:7566152). OPRL1 is widely expressed in the central nervous system, including the hippocampal dentate gyrus, cortical areas, striatum, thalamus, and hypothalamus (PMID:19501074). OPRL1 has been found to play an essential role in cognition, and to modulate inflammation and immune responses (PMID:30152845).

Notable Publications

Author	Pubmed ID	Journal	Application
Katarzyna Popiolek-Barczyk	25276817	Biomed Res Int	WB
Neili Xu	31865244	Int Immunopharmacol	WB,IHC
Anna Piotrowska	30076959	Biochim Biophys Acta	

Storage

Storage:
Store at -20°C. Stable for one year after shipment.
Storage Buffer:
PBS with 0.02% sodium azide and 50% glycerol pH 7.3.
Aliquoting is unnecessary for -20°C storage

*** 20ul sizes contain 0.1% BSA

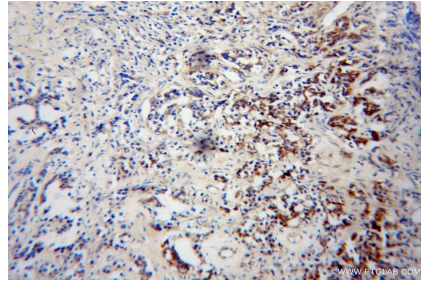
For technical support and original validation data for this product please contact:
T: 1 (888) 4PTGLAB (1-888-478-4522) (toll free in USA), or 1(312) 455-8498 (outside USA)
E: proteintech@ptglab.com
W: ptglab.com

This product is exclusively available under Proteintech Group brand and is not available to purchase from any other manufacturer.

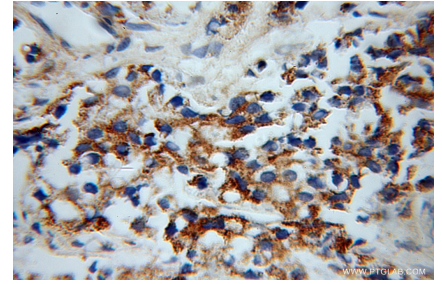
Selected Validation Data



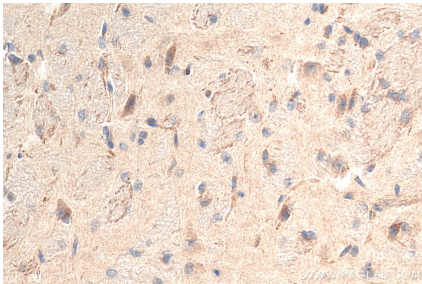
HeLa cells were subjected to SDS PAGE followed by western blot with 12970-1-AP (OPRL1 antibody) at dilution of 1:500 incubated at room temperature for 1.5 hours.



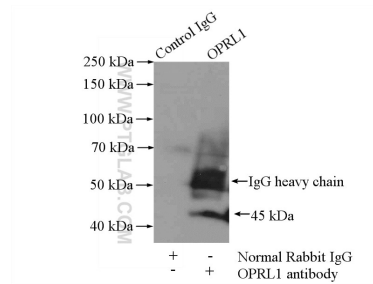
Immunohistochemical analysis of paraffin-embedded human gliomas using 12970-1-AP (OPRL1 antibody) at dilution of 1:100 (under 10x lens).



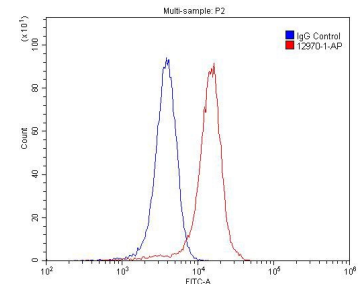
Immunohistochemical analysis of paraffin-embedded human gliomas using 12970-1-AP (OPRL1 antibody) at dilution of 1:100 (under 40x lens).



Immunohistochemical analysis of paraffin-embedded mouse brain tissue slide using 12970-1-AP (OPRL1 antibody) at dilution of 1:200 (under 40x lens). Heat mediated antigen retrieval with Tris-EDTA buffer (pH 9.0).



IP Result of anti-OPRL1 (IP:12970-1-AP, 4ug; Detection:12970-1-AP 1:500) with SH-SY5Y cells lysate 2000ug.



1x10⁶ SH-SY5Y cells were stained with 0.2ug OPRL1 antibody (12970-1-AP, red) and control antibody (blue). Fixed with 4% PFA blocked with 3% BSA (30 min). Alexa Fluor 488-conjugated AffiniPure Goat Anti-Rabbit IgG(H+L) with dilution 1:1500.