

For Research Use Only

JAM2 Polyclonal antibody

Catalog Number: 12972-1-AP

2 Publications



Basic Information

Catalog Number:

12972-1-AP

Size:

150ul , Concentration: 600 ug/ml by Nanodrop and 387 ug/ml by Bradford method using BSA as the standard;

Source:

Rabbit

Isotype:

IgG

Immunogen Catalog Number:

AG3431

GenBank Accession Number:

BC017779

GeneID (NCBI):

58494

UNIPROT ID:

P57087

Full Name:

junctional adhesion molecule 2

Calculated MW:

298 aa, 33 kDa

Observed MW:

33 kDa, 43 kDa

Purification Method:

Antigen affinity purification

Recommended Dilutions:

WB 1:500-1:2000

Applications

Tested Applications:

WB, ELISA

Cited Applications:

WB

Species Specificity:

human, mouse, rat

Cited Species:

human, mouse

Positive Controls:

WB : human placenta tissue, human heart tissue

Notable Publications

Author	Pubmed ID	Journal	Application
Hiroki Takeuchi	34448537	Cell Microbiol	WB
Guang Xu	28081450	Diabetes Res Clin Pract	WB

Storage

Storage:

Store at -20°C. Stable for one year after shipment.

Storage Buffer:

PBS with 0.02% sodium azide and 50% glycerol pH 7.3.

Aliquoting is unnecessary for -20°C storage

*** 20ul sizes contain 0.1% BSA

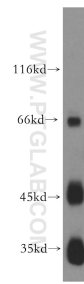
For technical support and original validation data for this product please contact:

T: 1 (888) 4PTGLAB (1-888-478-4522) (toll free in USA), or 1(312) 455-8498 (outside USA)

E: proteintech@ptglab.com
W: ptglab.com

This product is exclusively available under Proteintech Group brand and is not available to purchase from any other manufacturer.

Selected Validation Data



human placenta tissue were subjected to SDS PAGE followed by western blot with 12972-1-AP (JAM2 antibody) at dilution of 1:300 incubated at room temperature for 1.5 hours.