

For Research Use Only

EME1 Polyclonal antibody

Catalog Number: 12975-1-AP



Basic Information

Catalog Number: 12975-1-AP	GenBank Accession Number: BC016470	Purification Method: Antigen affinity purification
Size: 150ul , Concentration: 240 µg/ml by Nanodrop and 247 µg/ml by Bradford method using BSA as the standard;	GeneID (NCBI): 146956	Recommended Dilutions: WB 1:500-1:1000
Source: Rabbit	Full Name: essential meiotic endonuclease 1 homolog 1 (S. pombe)	
Isotype: IgG	Calculated MW: 583 aa, 65 kDa	
Immunogen Catalog Number: AG3580	Observed MW: 65 kDa	

Applications

Tested Applications: WB, ELISA	Positive Controls: WB : A375 cells, human liver tissue
Species Specificity: human, mouse, rat	

Background Information

Storage

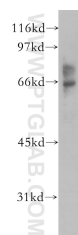
Storage:
Store at -20°C. Stable for one year after shipment.
Storage Buffer:
PBS with 0.02% sodium azide and 50% glycerol pH 7.3.
Aliquoting is unnecessary for -20°C storage

*** 20ul sizes contain 0.1% BSA

For technical support and original validation data for this product please contact:
T: 1 (888) 4PTGLAB (1-888-478-4522) (toll free in USA), or 1(312) 455-8498 (outside USA)
E: proteintech@ptglab.com
W: ptglab.com

This product is exclusively available under Proteintech Group brand and is not available to purchase from any other manufacturer.

Selected Validation Data



A375 cells were subjected to SDS PAGE followed by western blot with 12975-1-AP (EME1 antibody) at dilution of 1:500 incubated at room temperature for 1.5 hours.