

For Research Use Only

# TPTE Polyclonal antibody

Catalog Number: 12982-1-AP



## Basic Information

<b>Catalog Number:</b> 12982-1-AP	<b>GenBank Accession Number:</b> BC028719	<b>Purification Method:</b> Antigen affinity purification
<b>Size:</b> 150ul , Concentration: 260 µg/ml by Nanodrop and 247 µg/ml by Bradford method using BSA as the standard;	<b>GeneID (NCBI):</b> 7179	<b>Recommended Dilutions:</b> WB 1:500-1:2000 IHC 1:20-1:200 IF 1:10-1:100
<b>Source:</b> Rabbit	<b>Full Name:</b> transmembrane phosphatase with tensin homology	
<b>Isotype:</b> IgG	<b>Calculated MW:</b> 62 kDa, 64 kDa	
<b>Immunogen Catalog Number:</b> AG3606	<b>Observed MW:</b> 62 kDa, 64 kDa	

## Applications

### Tested Applications:

IF, IHC, WB, ELISA

### Species Specificity:

human

**Note-IHC: suggested antigen retrieval with TE buffer pH 9.0; (\*) Alternatively, antigen retrieval may be performed with citrate buffer pH 6.0**

### Positive Controls:

**WB :** HepG2 cells, HEK-293 cells, human testis tissue, BxPC-3 cells, mouse testis tissue

**IHC :** human testis tissue,

**IF :** BxPC-3 cells,

## Background Information

TPTE(Transmembrane phosphatase with tensin homology) is also named as CT44, BJ-HCC-5 and belongs to the non receptor class of the protein-tyrosine phosphatase family. The gene encodes a predicted polypeptide of 551 amino acids with at least 2 potential transmembrane domains and a tyrosine phosphatase motif. TPTE may be involved in the signal transduction pathways of the endocrine or spermatogenic function of the testis(PMID:10598804). It is putatively involved in linking the cell membrane to cytoskeleton. This protein is very similar in sequence to PTEN through the phosphatase and C2 domains, but lacks a PDZ binding motif and an extensively phosphorylated C-terminal tail(PMID:17240336). It has 4 isoforms produced by alternative splicing.

## Storage

### Storage:

Store at -20°C. Stable for one year after shipment.

### Storage Buffer:

PBS with 0.02% sodium azide and 50% glycerol pH 7.3.

Aliquoting is unnecessary for -20°C storage

\*\*\* 20ul sizes contain 0.1% BSA

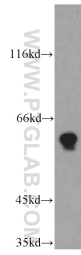
For technical support and original validation data for this product please contact:

T: 1 (888) 4PTGLAB (1-888-478-4522) (toll free in USA), or 1(312) 455-8498 (outside USA)

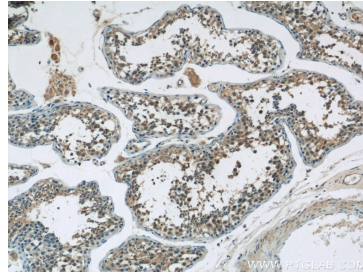
E: [proteintech@ptglab.com](mailto:proteintech@ptglab.com)  
W: [ptglab.com](http://ptglab.com)

This product is exclusively available under Proteintech Group brand and is not available to purchase from any other manufacturer.

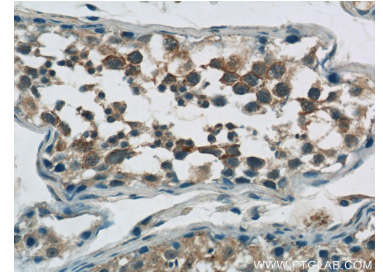
## Selected Validation Data



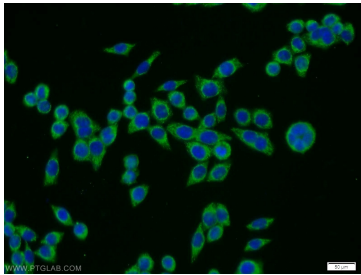
HepG2 cells were subjected to SDS PAGE followed by western blot with 12982-1-AP (TPTE antibody) at dilution of 1:500 incubated at room temperature for 1.5 hours.



Immunohistochemical analysis of paraffin-embedded human testis tissue slide using 12982-1-AP (TPTE Antibody) at dilution of 1:50 (under 10x lens).



Immunohistochemical analysis of paraffin-embedded human testis tissue slide using 12982-1-AP (TPTE Antibody) at dilution of 1:50 (under 40x lens).



Immunofluorescent analysis of BxPC-3 cells using 12982-1-AP (TPTE antibody) at dilution of 1:25 and Alexa Fluor 488-conjugated AffiniPure Goat Anti-Rabbit IgG(H+L).