

For Research Use Only

# PPIG Polyclonal antibody, PBS Only

Catalog Number: 12985-1-PBS



## Basic Information

**Catalog Number:**

12985-1-PBS

**Size:**

100ug, Concentration: 1 mg/ml by Nanodrop;

**Source:**

Rabbit

**Isotype:**

IgG

**Immunogen Catalog Number:**

AG3622

**GenBank Accession Number:**

BC001555

**GeneID (NCBI):**

9360

**UNIPROT ID:**

Q13427

**Full Name:**

peptidylprolyl isomerase G (cyclophilin G)

**Calculated MW:**

739 aa, 87 kDa

**Observed MW:**

89 kDa

**Purification Method:**

Antigen affinity purification

## Applications

**Tested Applications:**

WB, IHC, IF/ICC, Indirect ELISA

**Species Specificity:**

human, mouse, rat

## Background Information

Peptidyl-prolyl cis-trans isomerase G (commonly abbreviated as PPIG) belongs to the cyclophilin subfamily of peptidyl-prolyl cis-trans isomerases (PPIases), which act as molecular chaperones to accelerate protein folding and regulate vital cellular processes.

## Storage

**Storage:**

Store at -80°C.

**Storage Buffer:**

PBS only, pH7.3

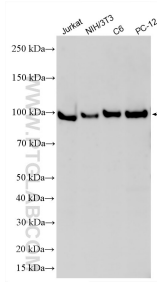
For technical support and original validation data for this product please contact:

T: 1 (888) 4PTGLAB (1-888-478-4522) (toll free in USA), or 1(312) 455-8498 (outside USA)

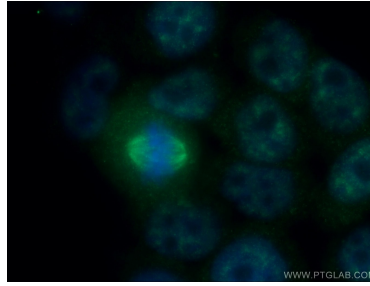
E: [proteintech@ptglab.com](mailto:proteintech@ptglab.com)  
W: [ptglab.com](http://ptglab.com)

**This product is exclusively available under Proteintech Group brand and is not available to purchase from any other manufacturer.**

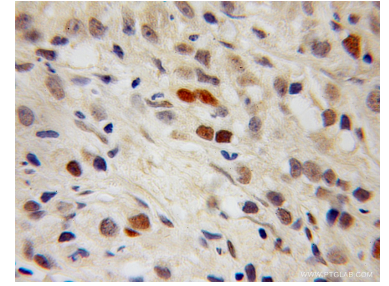
## Selected Validation Data



Various lysates were subjected to SDS PAGE followed by western blot with 12985-1-AP (PPIG antibody) at dilution of 1:800 incubated at room temperature for 1.5 hours. This data was developed using the same antibody clone with 12985-1-PBS in a different storage buffer formulation.



Immunofluorescent analysis of (4% PFA) fixed HeLa cells using 12985-1-AP (PPIG antibody) at dilution of 1:50 and Alexa Fluor 488-conjugated AffiniPure Goat Anti-Rabbit IgG(H+L). This data was developed using the same antibody clone with 12985-1-PBS in a different storage buffer formulation.



Immunohistochemical analysis of paraffin-embedded human prostate cancer using 12985-1-AP (PPIG antibody) at dilution of 1:100 (under 10x lens). This data was developed using the same antibody clone with 12985-1-PBS in a different storage buffer formulation.