

For Research Use Only

Ephrin B1 Polyclonal antibody

Catalog Number: 12999-1-AP

Featured Product

2 Publications



Basic Information

Catalog Number:

12999-1-AP

Size:

150ul, Concentration: 1000 ug/ml by Nanodrop;

Source:

Rabbit

Isotype:

IgG

Immunogen Catalog Number:

AG3669

GenBank Accession Number:

BC016649

GeneID (NCBI):

1947

UNIPROT ID:

P98172

Full Name:

ephrin-B1

Calculated MW:

346 aa, 38 kDa

Observed MW:

38 kDa

Purification Method:

Antigen affinity purification

Recommended Dilutions:

WB 1:500-1:2000

IHC 1:1000-1:4000

Applications

Tested Applications:

WB, IHC, ELISA

Cited Applications:

WB, IHC, IF

Species Specificity:

human, mouse, rat

Cited Species:

human, mouse, rat

Note-IHC: suggested antigen retrieval with TE buffer pH 9.0; (*) Alternatively, antigen retrieval may be performed with citrate buffer pH 6.0

Positive Controls:

WB : HEK-293 cells, rat kidney tissue

IHC : human kidney tissue, mouse kidney tissue

Background Information

EFNB1 (Ephrin B1) is a member of the ephrin family, which are membrane-bound guidance cues that interact with Eph receptors, a family of receptor tyrosine kinases. EFNB1 is X-inactivated, and it has been proposed that in heterozygous females, patchy loss of ephrin B1 disturbs tissue boundary formation at the developing coronal suture (PMID: 34824583, 18627045). EFNB1 mainly plays a central part in cell adhesion, angiogenesis, and development of the nervous system (PMID: 30326247).

Notable Publications

Author	Pubmed ID	Journal	Application
Li Liu	38501146	J Diabetes Clin Res	WB
Liping Chen	38097539	Signal Transduct Target Ther	WB, IHC, IF

Storage

Storage:

Store at -20°C. Stable for one year after shipment.

Storage Buffer:

PBS with 0.02% sodium azide and 50% glycerol pH 7.3.

Aliquoting is unnecessary for -20°C storage

*** 20ul sizes contain 0.1% BSA

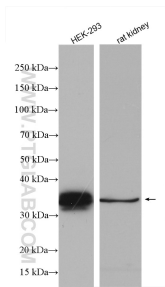
For technical support and original validation data for this product please contact:

T: 1 (888) 4PTGLAB (1-888-478-4522) (toll free in USA), or 1(312) 455-8498 (outside USA)

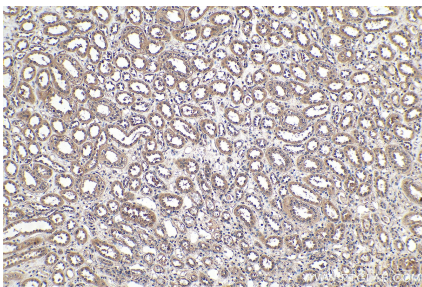
E: proteintech@ptglab.com
W: ptglab.com

This product is exclusively available under Proteintech Group brand and is not available to purchase from any other manufacturer.

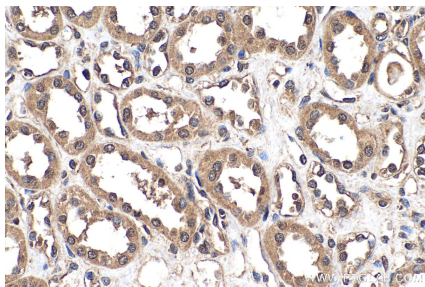
Selected Validation Data



Various lysates were subjected to SDS PAGE followed by western blot with 12999-1-AP (Ephrin B1 antibody) at dilution of 1:1000 incubated at room temperature for 1.5 hours.



Immunohistochemical analysis of paraffin-embedded human kidney tissue slide using 12999-1-AP (Ephrin B1 antibody) at dilution of 1:2000 (under 10x lens). Heat mediated antigen retrieval with Tris-EDTA buffer (pH 9.0).



Immunohistochemical analysis of paraffin-embedded human kidney tissue slide using 12999-1-AP (Ephrin B1 antibody) at dilution of 1:2000 (under 40x lens). Heat mediated antigen retrieval with Tris-EDTA buffer (pH 9.0).