

For Research Use Only

Ephrin B1 Polyclonal antibody, PBS Only

Catalog Number: 12999-1-PBS

Featured Product



Basic Information

Catalog Number:

12999-1-PBS

Size:

100ug, Concentration: 1 mg/ml by Nanodrop;

Source:

Rabbit

Isotype:

IgG

Immunogen Catalog Number:

AG3669

GenBank Accession Number:

BC016649

GeneID (NCBI):

1947

UNIPROT ID:

P98172

Full Name:

ephrin-B1

Calculated MW:

346 aa, 38 kDa

Observed MW:

38 kDa

Purification Method:

Antigen affinity purification

Applications

Tested Applications:

WB, IHC, Indirect ELISA

Species Specificity:

human, mouse, rat

Background Information

EFNB1 (Ephrin B1) is a member of the ephrin family, which are membrane-bound guidance cues that interact with Eph receptors, a family of receptor tyrosine kinases. EFNB1 is X-inactivated, and it has been proposed that in heterozygous females, patchy loss of ephrin B1 disturbs tissue boundary formation at the developing coronal suture (PMID: 34824583, 18627045). EFNB1 mainly plays a central part in cell adhesion, angiogenesis, and development of the nervous system (PMID: 30326247).

Storage

Storage:

Store at -80°C.

Storage Buffer:

PBS Only

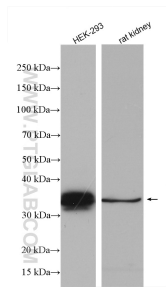
For technical support and original validation data for this product please contact:

T: 1 (888) 4PTGLAB (1-888-478-4522) (toll free in USA), or 1(312) 455-8498 (outside USA)

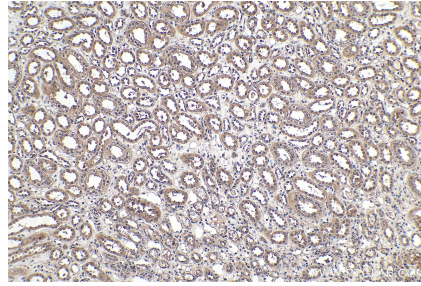
E: proteintech@ptglab.com
W: ptglab.com

This product is exclusively available under Proteintech Group brand and is not available to purchase from any other manufacturer.

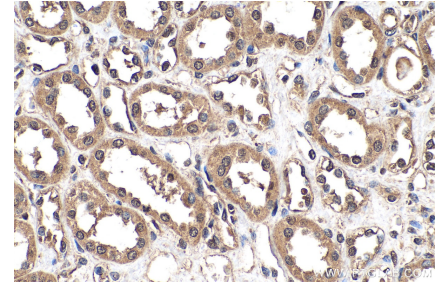
Selected Validation Data



Various lysates were subjected to SDS PAGE followed by western blot with 12999-1-AP (Ephrin B1 antibody) at dilution of 1:1000 incubated at room temperature for 1.5 hours. This data was developed using the same antibody clone with 12999-1-PBS in a different storage buffer formulation.



Immunohistochemical analysis of paraffin-embedded human kidney tissue slide using 12999-1-AP (Ephrin B1 antibody) at dilution of 1:2000 (under 10x lens). Heat mediated antigen retrieval with Tris-EDTA buffer (pH 9.0). This data was developed using the same antibody clone with 12999-1-PBS in a different storage buffer formulation.



Immunohistochemical analysis of paraffin-embedded human kidney tissue slide using 12999-1-AP (Ephrin B1 antibody) at dilution of 1:2000 (under 40x lens). Heat mediated antigen retrieval with Tris-EDTA buffer (pH 9.0). This data was developed using the same antibody clone with 12999-1-PBS in a different storage buffer formulation.