

For Research Use Only

# CUGBP1 Polyclonal antibody

Catalog Number: 13002-1-AP

Featured Product

4 Publications



## Basic Information

<b>Catalog Number:</b> 13002-1-AP	<b>GenBank Accession Number:</b> BC031079	<b>Purification Method:</b> Antigen affinity purification
<b>Size:</b> 150ul , Concentration: 400 µg/ml by Nanodrop;	<b>GeneID (NCBI):</b> 10658	<b>Recommended Dilutions:</b> WB 1:1000-1:4000 IP 0.5-4.0 ug for IP and 1:500-1:1000 for WB
<b>Source:</b> Rabbit	<b>Full Name:</b> CUG triplet repeat, RNA binding protein 1	<b>IHC 1:50-1:500</b> <b>IF 1:20-1:200</b>
<b>Isotype:</b> IgG	<b>Calculated MW:</b> 483 aa, 52 kDa	
<b>Immunogen Catalog Number:</b> AG3677	<b>Observed MW:</b> 51-55 kDa	

## Applications

### Tested Applications:

IF, IHC, IP, WB, ELISA

### Cited Applications:

IHC, WB

### Species Specificity:

human, mouse, rat

### Cited Species:

human, mouse

**Note-IHC: suggested antigen retrieval with TE buffer pH 9.0; (\*) Alternatively, antigen retrieval may be performed with citrate buffer pH 6.0**

### Positive Controls:

**WB:** HL-60 cells, HeLa cells, NIH/3T3 cells, HT-1080 cells, mouse brain tissue, rat brain tissue

**IP:** HeLa cells,

**IHC:** human breast cancer tissue, human skin cancer tissue, human testis tissue

**IF:** HeLa cells,

## Background Information

CUG triplet repeat RNA binding protein 1 (CUGBP1) is a member of the CUGBP Elav-like family (CELF), which plays an important role in cardiac development and function (PMID: 17130239). CUGBP1 has also been shown to localize to cytoplasmic stress granules when cells are stressed.

## Notable Publications

Author	Pubmed ID	Journal	Application
Xu Zhao	34697393	Sci Rep	WB
Jocelyn N Galloway	24986919	Hum Mol Genet	IHC
Gena Huang	31958132	Carcinogenesis	WB

## Storage

### Storage:

Store at -20°C. Stable for one year after shipment.

### Storage Buffer:

PBS with 0.02% sodium azide and 50% glycerol pH 7.3.

Aliquoting is unnecessary for -20°C storage

\*\*\* 20ul sizes contain 0.1% BSA

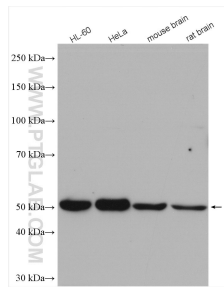
For technical support and original validation data for this product please contact:

T: 1 (888) 4PTGLAB (1-888-478-4522) (toll free in USA), or 1(312) 455-8498 (outside USA)

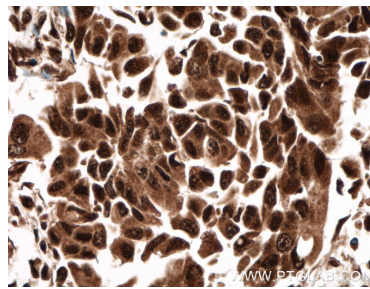
E: proteintech@ptglab.com  
W: ptglab.com

This product is exclusively available under Proteintech Group brand and is not available to purchase from any other manufacturer.

## Selected Validation Data



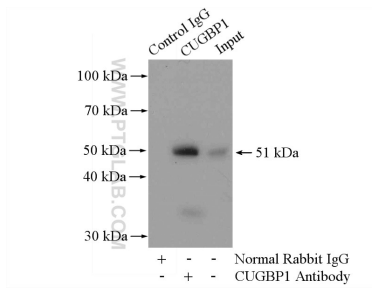
Various lysates were subjected to SDS PAGE followed by western blot with 13002-1-AP (CUGBP1 antibody) at dilution of 1:2000 incubated at room temperature for 1.5 hours.



Immunohistochemical analysis of paraffin-embedded human breast cancer tissue slide using 13002-1-AP (CUGBP1 antibody) at dilution of 1:200 (under 40x lens. Heat mediated antigen retrieval with Tris-EDTA buffer (pH 9.0).



Immunofluorescent analysis of HeLa cells, using CUGBP1 antibody 13002-1-AP at 1:50 dilution and FITC-labeled donkey anti-rabbit IgG (green). Blue pseudocolor = DAPI (fluorescent DNA dye).



IP Result of anti-CUGBP1 (IP:13002-1-AP, 4ug; Detection:13002-1-AP 1:500) with HeLa cells lysate 3200ug.