

For Research Use Only

# CMAS Polyclonal antibody, PBS Only

Catalog Number: 13006-1-PBS



## Basic Information

**Catalog Number:**

13006-1-PBS

**Size:**

100ug, Concentration: 1 mg/ml by Nanodrop;

**Source:**

Rabbit

**Isotype:**

IgG

**Immunogen Catalog Number:**

AG3686

**GenBank Accession Number:**

BC016609

**GeneID (NCBI):**

55907

**UNIPROT ID:**

Q8NFW8

**Full Name:**

cytidine monophosphate N-acetylneuraminic acid synthetase

**Calculated MW:**

48 kDa

**Observed MW:**

48 kDa

**Purification Method:**

Antigen affinity purification

## Applications

**Tested Applications:**

WB, IHC, IF/ICC, Indirect ELISA

**Species Specificity:**

human, mouse, rat

## Background Information

Cytidine monophosphate N-acetylneuraminic acid synthetase (CMAS), a key enzyme in the incorporation pathway, catalyzes the synthesis of CMP-sialic acid by utilizing CTP and sialic acid. Neu5Ac is activated in the nucleus by CMAS to form CMP-Neu5Ac, which is transported to the Golgi apparatus by SLC35A1 for sialylation of glycoproteins and gangliosides catalyzed by specific sialyl transferases (PMID: 30568043). Low CMAS gene expression correlated with reduced recurrence-free survival in a human colorectal cancer cohort (PMID: 30578646). Western blots indicated a range of bands at ~ 48 kDa.

## Storage

**Storage:**

Store at -80°C.

**Storage Buffer:**

PBS only, pH7.3

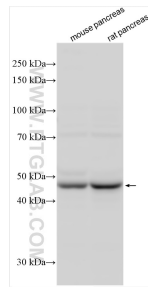
For technical support and original validation data for this product please contact:

T: 1 (888) 4PTGLAB (1-888-478-4522) (toll free in USA), or 1(312) 455-8498 (outside USA)

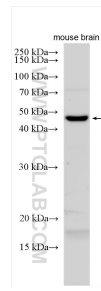
E: [proteintech@ptglab.com](mailto:proteintech@ptglab.com)  
W: [ptglab.com](http://ptglab.com)

**This product is exclusively available under Proteintech Group brand and is not available to purchase from any other manufacturer.**

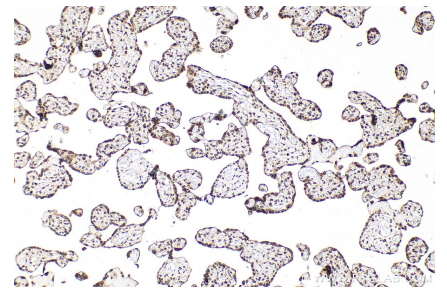
## Selected Validation Data



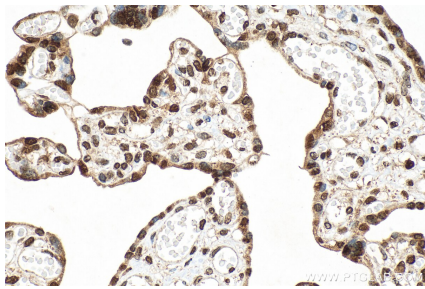
Various lysates were subjected to SDS PAGE followed by western blot with 13006-1-AP (CMAS antibody) at dilution of 1:4000 incubated at room temperature for 1.5 hours. This data was developed using the same antibody clone with 13006-1-PBS in a different storage buffer formulation.



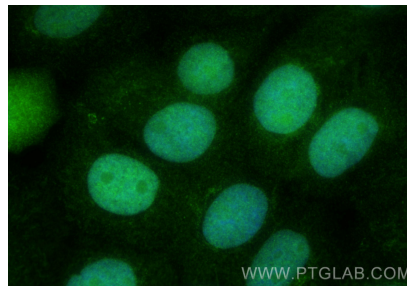
Various lysates were subjected to SDS PAGE followed by western blot with 13006-1-AP (CMAS antibody) at dilution of 1:4000 incubated at room temperature for 1.5 hours. This data was developed using the same antibody clone with 13006-1-PBS in a different storage buffer formulation.



Immunohistochemical analysis of paraffin-embedded human placenta tissue slide using 13006-1-AP (CMAS antibody) at dilution of 1:800 (under 10x lens). Heat mediated antigen retrieval with Tris-EDTA buffer (pH 9.0). This data was developed using the same antibody clone with 13006-1-PBS in a different storage buffer formulation.



Immunohistochemical analysis of paraffin-embedded human placenta tissue slide using 13006-1-AP (CMAS antibody) at dilution of 1:800 (under 40x lens). Heat mediated antigen retrieval with Tris-EDTA buffer (pH 9.0). This data was developed using the same antibody clone with 13006-1-PBS in a different storage buffer formulation.



Immunofluorescent analysis of (4% PFA) fixed A431 cells using CMAS antibody (13006-1-AP) at dilution of 1:400 and Multi-rAb Coralite® Plus 488-Goat Anti-Rabbit Recombinant Secondary Antibody (H+L) (RGAR002). This data was developed using the same antibody clone with 13006-1-PBS in a different storage buffer formulation.