

For Research Use Only

Ninein Polyclonal antibody

Catalog Number: 13007-1-AP

Featured Product

2 Publications



Basic Information

Catalog Number: 13007-1-AP	GenBank Accession Number: BC034708	Purification Method: Antigen affinity purification
Size: 150ul, Concentration: 350 µg/ml by Nanodrop;	GeneID (NCBI): 51199	Recommended Dilutions: WB 1:500-1:2000 IHC 1:50-1:500 IF 1:200-1:800
Source: Rabbit	Full Name: ninein (GSK3B interacting protein)	
Isotype: IgG	Calculated MW: 2090 aa, 243 kDa	
Immunogen Catalog Number: AG3688	Observed MW: 220-240 kDa	

Applications

Tested Applications:
IF, IHC, WB, ELISA

Cited Applications:
IF, WB

Species Specificity:
human, mouse

Cited Species:
human, mouse

Note-IHC: suggested antigen retrieval with TE buffer pH 9.0; (*) Alternatively, antigen retrieval may be performed with citrate buffer pH 6.0

Positive Controls:

WB : HeLa cells,

IHC : mouse brain tissue,

IF : HeLa cells, MCF-7 cells

Background Information

Ninein is a large coiled-coil protein that associates with the subdistal appendages of the mother centriole and the minus-ends of both centrioles. Ninein interacts with γ -tubulin and microtubule nucleation and anchoring at the centrosomes.

Notable Publications

Author	Pubmed ID	Journal	Application
Quynh P H Nguyen	33038334	Dev Cell	WB,IF
Nozawa Yoko Inès Yl	23907739	Dev Dyn	IF

Storage

Storage:

Store at -20°C. Stable for one year after shipment.

Storage Buffer:

PBS with 0.02% sodium azide and 50% glycerol pH 7.3.

Aliquoting is unnecessary for -20°C storage

*** 20ul sizes contain 0.1% BSA

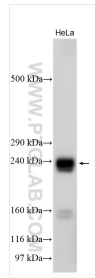
For technical support and original validation data for this product please contact:

T: 1 (888) 4PTGLAB (1-888-478-4522) (toll free in USA), or 1(312) 455-8498 (outside USA)

E: proteintech@ptglab.com
W: ptglab.com

This product is exclusively available under Proteintech Group brand and is not available to purchase from any other manufacturer.

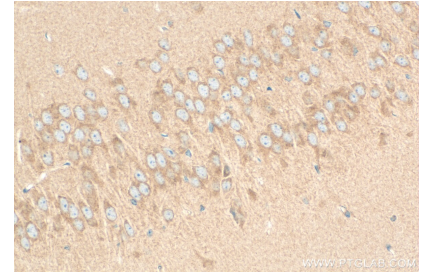
Selected Validation Data



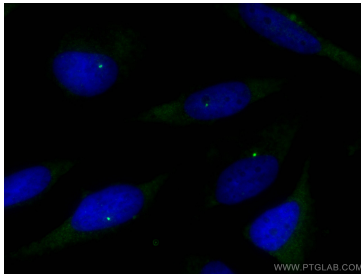
HeLa cells were subjected to SDS PAGE followed by western blot with 13007-1-AP (Ninein antibody) at dilution of 1:1000 incubated at room temperature for 1.5 hours.



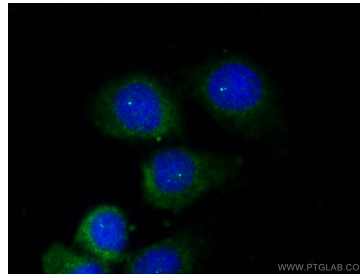
Immunohistochemical analysis of paraffin-embedded mouse brain tissue slide using 13007-1-AP (Ninein antibody) at dilution of 1:200 (under 10x lens). Heat mediated antigen retrieval with Tris-EDTA buffer (pH 9.0).



Immunohistochemical analysis of paraffin-embedded mouse brain tissue slide using 13007-1-AP (Ninein antibody) at dilution of 1:200 (under 40x lens). Heat mediated antigen retrieval with Tris-EDTA buffer (pH 9.0).



Immunofluorescent analysis of (-20°C Methanol) fixed HeLa cells using Ninein antibody (13007-1-AP) at dilution of 1:400 and CoraLite®488-Conjugated AffiniPure Goat Anti-Rabbit IgG(H+L).



Immunofluorescent analysis of (-20°C Methanol) fixed MCF-7 cells using Ninein antibody (13007-1-AP) at dilution of 1:400 and CoraLite®488-Conjugated AffiniPure Goat Anti-Rabbit IgG(H+L).