

PTPRS Polyclonal antibody

Catalog Number: 13008-1-AP

Featured Product

5 Publications

Basic Information

Catalog Number:

13008-1-AP

Size:

150ul, Concentration: 1000 µg/ml by Nanodrop;

Source:

Rabbit

Isotype:

IgG

Immunogen Catalog Number:

AG3691

GenBank Accession Number:

BC029496

GeneID (NCBI):

5802

Full Name:

protein tyrosine phosphatase, receptor type, S

Calculated MW:

128aa, 14 kDa; 1948aa, 217 kDa

Observed MW:

75-100 kDa

Purification Method:

Antigen affinity purification

Recommended Dilutions:

WB 1:500-1:1000

IP 0.5-4.0 µg for IP and 1:200-1:1000 for WB

IHC 1:50-1:500

Applications

Tested Applications:

FC, IHC, IP, WB, ELISA

Cited Applications:

IF, IHC, WB

Species Specificity:

human, mouse, rat

Cited Species:

human, mouse, rat

Positive Controls:

WB : HeLa cells, mouse brain tissue

IP : mouse brain tissue,

IHC : human kidney tissue,

Note-IHC: suggested antigen retrieval with TE buffer pH 9.0; (*) Alternatively, antigen retrieval may be performed with citrate buffer pH 6.0

Background Information

Type II a receptor protein tyrosine phosphatases (rPTPσ) are cell surface receptors important for nervous system development, function, and repair. The expression of rPTPσ has previously been reported in b-cells and other target organs for INS although the probes chosen did not permit to distinguish between the splice variants. Proteolytic processing near the transmembrane domain generates an extracellular N-terminal E-domain of 130 kDa and a C-terminal P-domain of approximately 85 kDa of rPTPσ, and the short splice variants rPTPσ 3 and 4 contain an E-domain of 95 kDa (PMID: 16552719). rPTPσ expression was observed in tissue lysates of the adult mouse sensory-motor cortex and thoracic spinal cord (T8-T10) as a 75-80kDa immunoreactive band (PMID: 19780196).

Notable Publications

Author	Pubmed ID	Journal	Application
Andrea M Gomez	25407677	Elife	WB
Jingjing Wu	33151000	J Gene Med	WB
Jun Zhong	30688376	J Cell Biochem	IF, WB

Storage

Storage:

Store at -20°C. Stable for one year after shipment.

Storage Buffer:

PBS with 0.02% sodium azide and 50% glycerol pH 7.3.

Aliquoting is unnecessary for -20°C storage

*** 20ul sizes contain 0.1% BSA

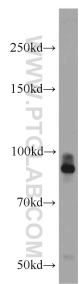
For technical support and original validation data for this product please contact:

T: 1 (888) 4PTGLAB (1-888-478-4522) (toll free in USA), or 1(312) 455-8498 (outside USA)

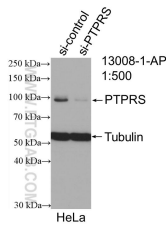
E: proteintech@ptglab.com
W: ptglab.com

This product is exclusively available under Proteintech Group brand and is not available to purchase from any other manufacturer.

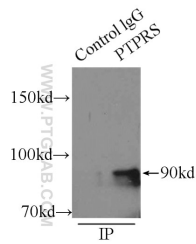
Selected Validation Data



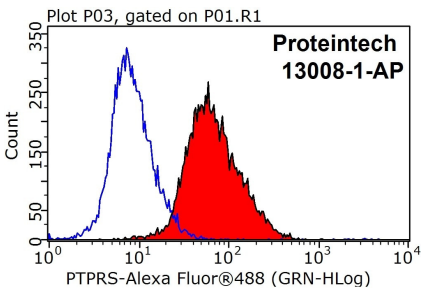
HeLa cells were subjected to SDS PAGE followed by western blot with 13008-1-AP (PTPRS antibody) at dilution of 1:1000 incubated at room temperature for 1.5 hours.



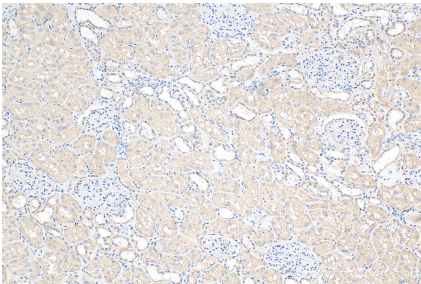
WB result of PTPRS antibody (13008-1-AP; 1:500; incubated at room temperature for 1.5 hours) with sh-Control and sh-PTPRS transfected HeLa cells.



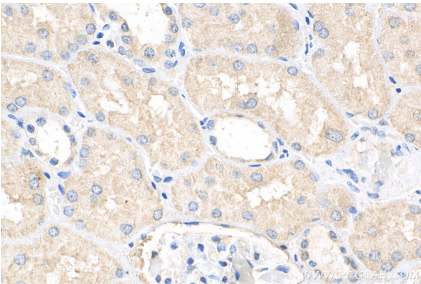
IP Result of anti-PTPRS (IP:13008-1-AP, 5ug; Detection:13008-1-AP 1:400) with mouse brain tissue lysate 6500ug.



1X10⁶ HeLa cells were stained with 0.2ug PTPRS antibody (13008-1-AP, red) and control antibody (blue). Fixed with 90% MeOH blocked with 3% BSA (30 min). Alexa Fluor 488-conjugated AffiniPure Goat Anti-Rabbit IgG(H+L) with dilution 1:1000.



Immunohistochemical analysis of paraffin-embedded human kidney tissue slide using 13008-1-AP (PTPRS antibody) at dilution of 1:200 (under 10x lens). Heat mediated antigen retrieval with Tris-EDTA buffer (pH 9.0).



Immunohistochemical analysis of paraffin-embedded human kidney tissue slide using 13008-1-AP (PTPRS antibody) at dilution of 1:200 (under 40x lens). Heat mediated antigen retrieval with Tris-EDTA buffer (pH 9.0).