

For Research Use Only

RPIA Polyclonal antibody

Catalog Number: 13010-1-AP

1 Publications



Basic Information

Catalog Number:

13010-1-AP

Size:

150ul , Concentration: 450 ug/ml by Nanodrop;

Source:

Rabbit

Isotype:

IgG

Immunogen Catalog Number:

AG3699

GenBank Accession Number:

BC015529

GeneID (NCBI):

22934

UNIPROT ID:

P49247

Full Name:

ribose 5-phosphate isomerase A

Calculated MW:

311 aa, 33 kDa

Observed MW:

33 kDa

Purification Method:

Antigen affinity purification

Recommended Dilutions:

WB 1:500-1:3000

IF/ICC 1:10-1:100

Applications

Tested Applications:

WB, IF/ICC, ELISA

Cited Applications:

WB, IHC

Species Specificity:

human, mouse, rat

Cited Species:

human, mouse

Positive Controls:

WB : mouse spleen tissue, HEK-293 cells, MCF-7 cells, PC-3 cells

IF/ICC : HepG2 cells,

Background Information

RPIA(Ribose-5-phosphate isomerase) is also named as RPI and belongs to the ribose 5-phosphate isomerase family. It is involved in pentose-phosphate shunt, non-oxidative branch. It is an enzyme in the pentose-phosphate pathway, appears to be determined by a single structural locus and is probably a dimer(PMID:7396409).

Notable Publications

Author	Pubmed ID	Journal	Application
Longzheng Xia	38385081	Int J Biol Sci	WB,IHC

Storage

Storage:

Store at -20°C. Stable for one year after shipment.

Storage Buffer:

PBS with 0.02% sodium azide and 50% glycerol pH 7.3.

Aliquoting is unnecessary for -20°C storage

*** 20ul sizes contain 0.1% BSA

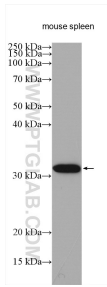
For technical support and original validation data for this product please contact:

T: 1 (888) 4PTGLAB (1-888-478-4522) (toll free in USA), or 1(312) 455-8498 (outside USA)

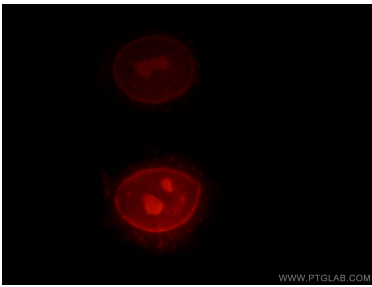
E: proteintech@ptglab.com
W: ptglab.com

This product is exclusively available under Proteintech Group brand and is not available to purchase from any other manufacturer.

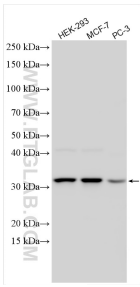
Selected Validation Data



mouse spleen tissues were subjected to SDS PAGE followed by western blot with 13010-1-AP (RPIA antibody) at dilution of 1:1500 incubated at room temperature for 1.5 hours.



Immunofluorescent analysis of HepG2 cells, using RPIA antibody 13010-1-AP at 1:25 dilution and Rhodamine-labeled goat anti-rabbit IgG (red).



Various lysates were subjected to SDS PAGE followed by western blot with 13010-1-AP (RPIA antibody) at dilution of 1:4000 incubated at room temperature for 1.5 hours.