

For Research Use Only

MMP23B Polyclonal antibody

Catalog Number: 13020-1-AP **1 Publications**



Basic Information

Catalog Number: 13020-1-AP	GenBank Accession Number: BC025719	Purification Method: Antigen affinity purification
Size: 150ul , Concentration: 550 µg/ml by Nanodrop and 287 µg/ml by Bradford method using BSA as the standard;	GeneID (NCBI): 8510	Recommended Dilutions: WB 1:500-1:1000 IHC 1:100-1:400 IF 1:50-1:500
Source: Rabbit	Full Name: matrix metalloproteinase 23B	
Isotype: IgG	Calculated MW: 390 aa, 44 kDa	
Immunogen Catalog Number: AG4113	Observed MW: 46-60 kDa	

Applications

Tested Applications: FC, IF, IHC, WB, ELISA	Positive Controls: WB : A549 cells, HepG2 cells, mouse liver tissue, PC-3 cells IHC : human ovary tumor tissue, human liver cancer tissue IF : HepG2 cells,
Cited Applications: IHC	
Species Specificity: human, mouse	
Cited Species: human	

Note-IHC: suggested antigen retrieval with TE buffer pH 9.0; (*) Alternatively, antigen retrieval may be performed with citrate buffer pH 6.0

Background Information

MMP23B(matrix metalloproteinase 23B) is also named as MMP21, MMP22.It is a regulator in matrix remodeling and may be playing a role in enchondral bone formation and in regulation of cranial suture closure .It has 3 isoforms produced by alternative splicing with the molecular weight of 44kDa,48kDa and 46kDa,respectively.It also can be N-glycosylated.

Notable Publications

Author	Pubmed ID	Journal	Application
Yexin Tong	36434634	J Hematol Oncol	IHC

Storage

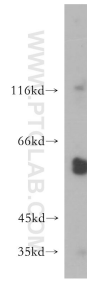
Storage:
Store at -20°C. Stable for one year after shipment.
Storage Buffer:
PBS with 0.02% sodium azide and 50% glycerol pH 7.3.
Aliquoting is unnecessary for -20°C storage

*** 20ul sizes contain 0.1% BSA

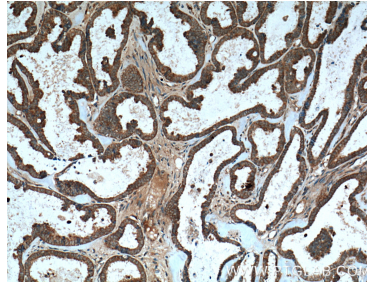
For technical support and original validation data for this product please contact:
T: 1 (888) 4PTGLAB (1-888-478-4522) (toll free in USA), or 1(312) 455-8498 (outside USA)
E: proteintech@ptglab.com
W: ptglab.com

This product is exclusively available under Proteintech Group brand and is not available to purchase from any other manufacturer.

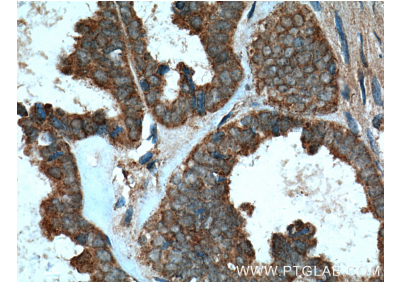
Selected Validation Data



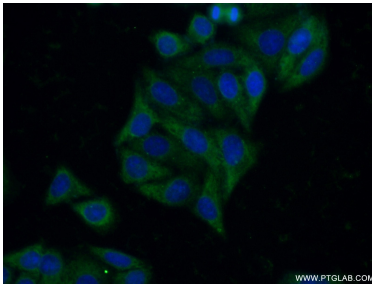
A549 cells were subjected to SDS PAGE followed by western blot with 13020-1-AP (MMP23B antibody) at dilution of 1:500 incubated at room temperature for 1.5 hours.



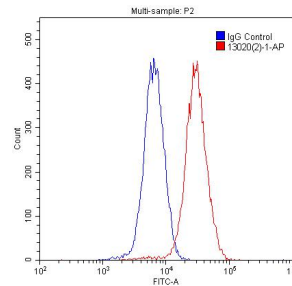
Immunohistochemical analysis of paraffin-embedded human ovary tumor tissue slide using 13020-1-AP (MMP23B Antibody) at dilution of 1:200 (under 10x lens). Heat mediated antigen retrieval with Tris-EDTA buffer (pH 9.0).



Immunohistochemical analysis of paraffin-embedded human ovary tumor tissue slide using 13020-1-AP (MMP23B Antibody) at dilution of 1:200 (under 40x lens). Heat mediated antigen retrieval with Tris-EDTA buffer (pH 9.0).



Immunofluorescent analysis of (-20°C Ethanol) fixed HepG2 cells using 13020-1-AP (MMP23B antibody) at dilution of 1:50 and Alexa Fluor 488-conjugated AffiniPure Goat Anti-Rabbit IgG(H+L).



1x10⁶ HepG2 cells were stained with 0.2ug MMP23B antibody (13020-1-AP, red) and control antibody (blue). Alexa Fluor 488-conjugated AffiniPure Goat Anti-Rabbit IgG(H+L) with dilution 1:1500. Cells were fixed with 4% PFA and permeabilized with 0.1% Triton X-100.