

For Research Use Only

# MMP23B Polyclonal antibody, PBS Only

Catalog Number:13020-1-PBS



## Basic Information

<b>Catalog Number:</b> 13020-1-PBS	<b>GenBank Accession Number:</b> BC025719	<b>Purification Method:</b> Antigen affinity purification
<b>Size:</b> 100ug , Concentration: 1mg/ml by Nanodrop;	<b>GeneID (NCBI):</b> 8510	
<b>Source:</b> Rabbit	<b>UNIPROT ID:</b> O75900	
<b>Isotype:</b> IgG	<b>Full Name:</b> matrix metalloproteinase 23B	
<b>Immunogen Catalog Number:</b> AG4113	<b>Calculated MW:</b> 390 aa, 44 kDa	
	<b>Observed MW:</b> 46-60 kDa	

## Applications

**Tested Applications:**  
WB, IHC, IF/ICC, FC (Intra), ELISA

**Species Specificity:**  
human, mouse

## Background Information

MMP23B(matrix metalloproteinase 23B) is also named as MMP21, MMP22.It is a regulator in matrix remodeling and may be playing a role in enchondral bone formation and in regulation of cranial suture closure .It has 3 isoforms produced by alternative splicing with the molecular weight of 44kDa,48kDa and 46kDa,respectively.It also can be N-glycosylated.

## Storage

**Storage:**  
Store at -80°C.  
**Storage Buffer:**  
PBS only, pH7.3

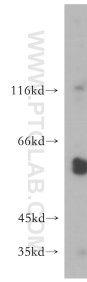
For technical support and original validation data for this product please contact:

T: 1 (888) 4PTGLAB (1-888-478-4522) (toll free  
in USA), or 1(312) 455-8498 (outside USA)

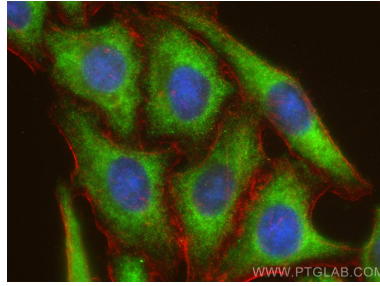
E: [proteintech@ptglab.com](mailto:proteintech@ptglab.com)  
W: [ptglab.com](http://ptglab.com)

**This product is exclusively available under Proteintech Group brand and is not available to purchase from any other manufacturer.**

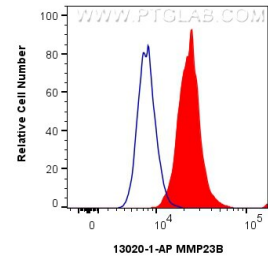
## Selected Validation Data



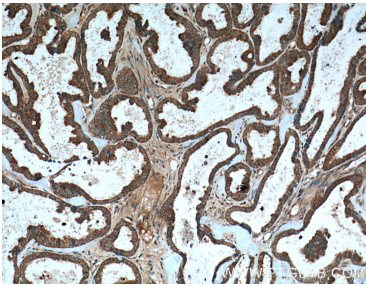
A549 cells were subjected to SDS PAGE followed by western blot with 13020-1-AP (MMP23B antibody) at dilution of 1:500 incubated at room temperature for 1.5 hours. This data was developed using the same antibody clone with 13020-1-PBS in a different storage buffer formulation.



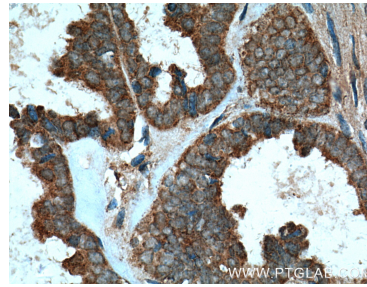
Immunofluorescent analysis of (-20°C Ethanol) fixed HepG2 cells using MMP23B antibody (13020-1-AP) at dilution of 1:200 and Multi-rAb CoraLite® Plus 488-Goat Anti-Rabbit Recombinant Secondary Antibody (H+L) (RGAR002), CL594-Phalloidin (red). This data was developed using the same antibody clone with 13020-1-PBS in a different storage buffer formulation.



$1 \times 10^6$  HepG2 cells were intracellularly stained with 0.25 ug MMP23B Polyclonal antibody (13020-1-AP) and CoraLite® 488-Conjugated Goat Anti-Rabbit IgG(H+L) (SA00013-2)(red), or 0.25 ug Isotype Control (blue). Cells were fixed with 4% PFA and permeabilized with Flow Cytometry Perm Buffer (PF00011-C). This data was developed using the same antibody clone with 13020-1-PBS in a different storage buffer formulation.



Immunohistochemical analysis of paraffin-embedded human ovary tumor tissue slide using 13020-1-AP (MMP23B Antibody) at dilution of 1:200 (under 10x lens). Heat mediated antigen retrieval with Tris-EDTA buffer (pH 9.0). This data was developed using the same antibody clone with 13020-1-PBS in a different storage buffer formulation.



Immunohistochemical analysis of paraffin-embedded human ovary tumor tissue slide using 13020-1-AP (MMP23B Antibody) at dilution of 1:200 (under 40x lens). Heat mediated antigen retrieval with Tris-EDTA buffer (pH 9.0). This data was developed using the same antibody clone with 13020-1-PBS in a different storage buffer formulation.