

For Research Use Only

ENTPD3 Polyclonal antibody

Catalog Number: 13021-1-AP **1 Publications**



Basic Information

Catalog Number: 13021-1-AP	GenBank Accession Number: BC029869	Purification Method: Antigen affinity purification
Size: 150ul , Concentration: 750 µg/ml by Nanodrop and 487 µg/ml by Bradford method using BSA as the standard;	GeneID (NCBI): 956	Recommended Dilutions: WB 1:500-1:2000 IF 1:200-1:800
Source: Rabbit	Full Name: ectonucleoside triphosphate diphosphohydrolase 3	
Isotype: IgG	Calculated MW: 529 aa, 59 kDa	
Immunogen Catalog Number: AG4114	Observed MW: 59 kDa	

Applications

Tested Applications: IF, WB, ELISA	Positive Controls: WB : human brain tissue, Jurkat cells, Raji cells
Cited Applications: WB	IF : U2OS cells,
Species Specificity: human	
Cited Species: mouse	

Background Information

ENTPD3, also known as NTPDase3 or CD39L3, belongs to the GDA1/CD39 NTPase family. ENTPD3 has a threefold preference for the hydrolysis of ATP over ADP. ENTPD3 is expressed in adult brain, pancreas, spleen and prostate, but not in liver and peripheral blood leukocytes. ENTPD3 has 2 isoforms with the molecular mass of 51 and 59 kDa.

Notable Publications

Author	Pubmed ID	Journal	Application
Qian Wang	34059669	Nat Commun	WB

Storage

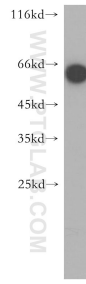
Storage:
Store at -20°C. Stable for one year after shipment.
Storage Buffer:
PBS with 0.02% sodium azide and 50% glycerol pH 7.3.
Aliquoting is unnecessary for -20°C storage

***** 20ul sizes contain 0.1% BSA**

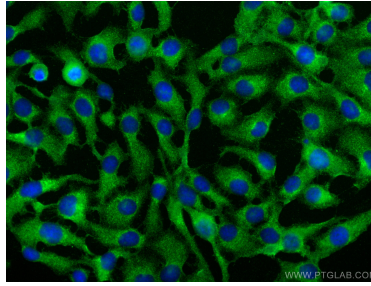
For technical support and original validation data for this product please contact:
T: 1 (888) 4PTGLAB (1-888-478-4522) (toll free in USA), or 1(312) 455-8498 (outside USA) E: proteintech@ptglab.com W: ptglab.com

This product is exclusively available under Proteintech Group brand and is not available to purchase from any other manufacturer.

Selected Validation Data



human brain tissue were subjected to SDS PAGE followed by western blot with 13021-1-AP (ENTPD3 antibody) at dilution of 1:500 incubated at room temperature for 1.5 hours.



Immunofluorescent analysis of (-20°C Methanol) fixed U2OS cells using ENTPD3 antibody (13021-1-AP) at dilution of 1:400 and CoraLite® 488-Conjugated AffiniPure Goat Anti-Rabbit IgG(H+L).