

For Research Use Only

# FBX15 Polyclonal antibody, PBS Only

Catalog Number: 13024-1-PBS

Featured Product



## Basic Information

**Catalog Number:**

13024-1-PBS

**Size:**

100ug, Concentration: 1 mg/ml by Nanodrop;

**Source:**

Rabbit

**Isotype:**

IgG

**Immunogen Catalog Number:**

AG3564

**GenBank Accession Number:**

BC029579

**GeneID (NCBI):**

201456

**UNIPROT ID:**

Q8NCQ5

**Full Name:**

F-box protein 15

**Calculated MW:**

434 aa, 49 kDa

**Observed MW:**

55 kDa

**Purification Method:**

Antigen affinity purification

## Applications

**Tested Applications:**

WB, IHC, Indirect ELISA

**Species Specificity:**

human, mouse

## Background Information

F-box proteins have been shown to be critical for the ubiquitin-mediated degradation of cellular regulatory proteins, and they are a family of eukaryotic proteins characterized by an approximately 40 amino acid motif. SCF complex, a class of ubiquitin ligases, consists of invariable components, Skp1 and Cullin, and variable components of F-box proteins, which have a primary role in determining substrate specificity. The F-box proteins are divided into 3 classes: FBWs containing WD-40 domains, FBLs containing leucine-rich repeats, and FBXs containing either different protein-protein interaction modules or no recognizable motifs. FBX15 (or FBX15) belongs to the FBXs class, and 2 isoforms produced by alternative splicing has been described. This antibody is expected detect both isoforms.

## Storage

**Storage:**

Store at -80°C.

**Storage Buffer:**

PBS Only

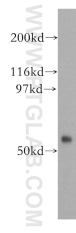
For technical support and original validation data for this product please contact:

T: 1 (888) 4PTGLAB (1-888-478-4522) (toll free in USA), or 1(312) 455-8498 (outside USA)

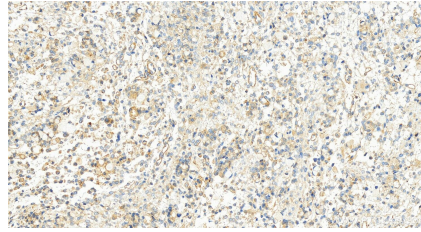
E: [proteintech@ptglab.com](mailto:proteintech@ptglab.com)  
W: [ptglab.com](http://ptglab.com)

**This product is exclusively available under Proteintech Group brand and is not available to purchase from any other manufacturer.**

## Selected Validation Data



A2780 cells were subjected to SDS PAGE followed by western blot with 13024-1-AP (FBX15 antibody) at dilution of 1:1500 incubated at room temperature for 1.5 hours. This data was developed using the same antibody clone with 13024-1-PBS in a different storage buffer formulation.



Immunohistochemical analysis of paraffin-embedded human ovary cancer tissue slide using 13024-1-AP (FBX15 antibody) at dilution of 1:400 (under 20x lens). Heat mediated antigen retrieval with Tris-EDTA buffer (pH 9.0). This data was developed using the same antibody clone with 13024-1-PBS in a different storage buffer formulation.