

For Research Use Only

SACM1L Polyclonal antibody

Catalog Number: 13033-1-AP

Featured Product

18 Publications



Basic Information

Catalog Number:

13033-1-AP

Size:

150ul, Concentration: 407 µg/ml by Bradford method using BSA as the standard;

Source:

Rabbit

Isotype:

IgG

Immunogen Catalog Number:

AG3682

GenBank Accession Number:

BC016559

GeneID (NCBI):

22908

Full Name:

SAC1 suppressor of actin mutations 1-like (yeast)

Calculated MW:

587 aa, 67 kDa

Observed MW:

60-67 kDa

Purification Method:

Antigen affinity purification

Recommended Dilutions:

WB 1:500-1:2000

IP 0.5-4.0 µg for IP and 1:500-1:2000

for WB

IHC 1:20-1:200

IF 1:50-1:500

Applications

Tested Applications:

IF, IHC, IP, WB, ELISA

Cited Applications:

IF, IP, WB

Species Specificity:

human, mouse, rat

Cited Species:

human, rat, mouse

Positive Controls:

WB : human kidney tissue, A549 cells, mouse kidney tissue, mouse lung tissue, human brain tissue

IP : mouse kidney tissue,

IHC : human brain tissue, human heart tissue

IF : A549 cells,

Note-IHC: suggested antigen retrieval with TE buffer pH 9.0; (*) Alternatively, antigen retrieval may be performed with citrate buffer pH 6.0

Background Information

SACM1L(Suppressor of actin mutations 1-like protein) is also named KIAA0851. It is a phosphoinositide phosphatase that hydrolyzes PtdIns3P and PtdIns4P and has low activity towards PtdIns(3,5)P2.

Notable Publications

Author	Pubmed ID	Journal	Application
Jochen Schwenk	31604597	Neuron	WB
Ying Gao	36280710	Cell Res	WB
Yuichi Wakana	33156328	J Cell Biol	WB

Storage

Storage:

Store at -20°C. Stable for one year after shipment.

Storage Buffer:

PBS with 0.02% sodium azide and 50% glycerol pH 7.3.

Aliquoting is unnecessary for -20°C storage

*** 20ul sizes contain 0.1% BSA

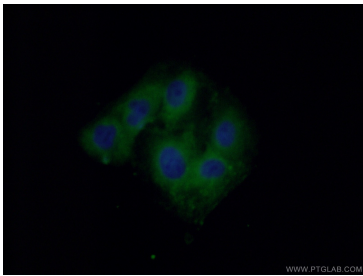
For technical support and original validation data for this product please contact:

T: 1 (888) 4PTGLAB (1-888-478-4522) (toll free in USA), or 1(312) 455-8498 (outside USA)

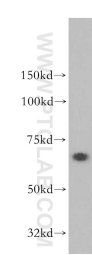
E: proteintech@ptglab.com
W: ptglab.com

This product is exclusively available under Proteintech Group brand and is not available to purchase from any other manufacturer.

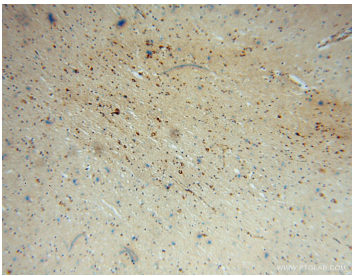
Selected Validation Data



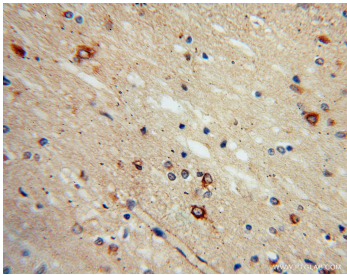
Immunofluorescent analysis of (-20°C Ethanol) fixed A549 cells using 13033-1-AP (SACM1L antibody) at dilution of 1:50 and Alexa Fluor 488-conjugated AffiniPure Goat Anti-Rabbit IgG(H+L).



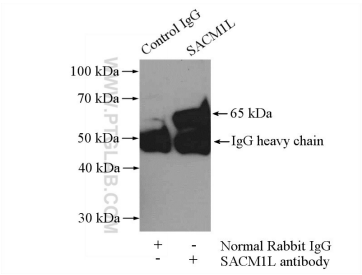
human kidney tissue were subjected to SDS PAGE followed by western blot with 13033-1-AP (SACM1L antibody) at dilution of 1:1000 incubated at room temperature for 1.5 hours.



Immunohistochemical analysis of paraffin-embedded human brain using 13033-1-AP (SACM1L antibody) at dilution of 1:100 (under 10x lens).



Immunohistochemical analysis of paraffin-embedded human brain using 13033-1-AP (SACM1L antibody) at dilution of 1:100 (under 40x lens).



IP Result of anti-SACM1L (IP:13033-1-AP, 4ug; Detection:13033-1-AP 1:1000) with mouse kidney tissue lysate 4000ug.