

For Research Use Only

FGFR2 Polyclonal antibody

Catalog Number: 13042-1-AP

8 Publications



Basic Information

| | | |
|--|--|--|
| Catalog Number: 13042-1-AP | GenBank Accession Number: BC039243 | Purification Method: Antigen affinity purification |
| Size: 150ul , Concentration: 550 ug/ml by Nanodrop and 300 ug/ml by Bradford method using BSA as the standard; | GeneID (NCBI): 2263 | Recommended Dilutions: IHC 1:50-1:500 |
| Source: Rabbit | UNIPROT ID: P21802 | IF/ICC 1:200-1:800 |
| Isotype: IgG | Full Name: fibroblast growth factor receptor 2 | |
| Immunogen Catalog Number: AG3701 | Calculated MW: 709 aa, 79 kDa | |
| | Observed MW: | |

Applications

| | |
|--|---|
| Tested Applications: IHC, IF/ICC, FC (Intra), ELISA | Positive Controls: |
| Cited Applications: IHC, IF | IHC : human breast cancer tissue, human prostate cancer tissue |
| Species Specificity: human | IF/ICC : HeLa cells, HepG2 cells |
| Cited Species: human, mouse | |
| Note-IHC: suggested antigen retrieval with TE buffer pH 9.0; (*) Alternatively, antigen retrieval may be performed with citrate buffer pH 6.0 | |

Background Information

FGFR2 (Fibroblast growth factor receptor 2) is a tyrosine-protein kinase that acts as a cell-surface receptor for fibroblast growth factors and plays an essential role in the regulation of cell proliferation, differentiation, migration, and apoptosis. Ligand binding leads to the activation of several signaling pathways, such as RAS, MAPK1/ERK2, MAPK3/ERK1, and the MAP Kinase signaling pathway, as well as the AKT1 signaling pathway. Mutations in the gene of FGFR2 are associated with Crouzon syndrome, Pfeiffer syndrome, Craniosynostosis, Apert syndrome, Jackson-Weiss syndrome, Beare-Stevenson cutis gyrata syndrome, Saethre-Chotzen syndrome, and syndromic craniosynostosis. This polyclonal antibody raised against 358-704aa of human FGFR2 can cross-react with other members of the FGFR family.

Notable Publications

| Author | Pubmed ID | Journal | Application |
|-------------|-----------|-------------------|-------------|
| Haie Qu | 34487480 | Anim Biotechnol | |
| Zhaodong Li | 36143417 | Life (Basel) | |
| Limin Wang | 36305369 | Tissue Eng Part A | IF |

Storage

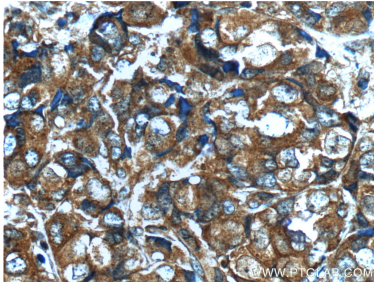
Storage:
Store at -20°C. Stable for one year after shipment.
Storage Buffer:
PBS with 0.02% sodium azide and 50% glycerol pH 7.3.
Aliquoting is unnecessary for -20°C storage

*** 20ul sizes contain 0.1% BSA

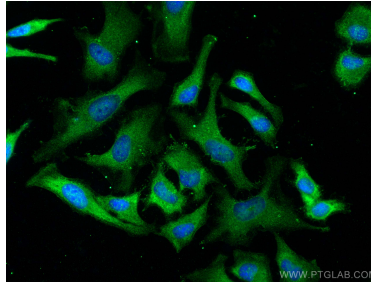
For technical support and original validation data for this product please contact:
T: 1 (888) 4PTGLAB (1-888-478-4522) (toll free in USA), or 1(312) 455-8498 (outside USA)
E: proteintech@ptglab.com
W: ptglab.com

This product is exclusively available under Proteintech Group brand and is not available to purchase from any other manufacturer.

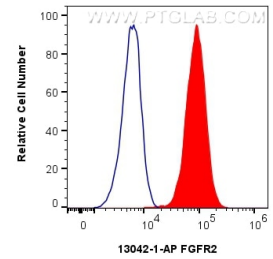
Selected Validation Data



Immunohistochemical analysis of paraffin-embedded human breast cancer tissue slide using 13042-1-AP (FGFR2 Antibody) at dilution of 1:200 (under 40x lens).



Immunofluorescent analysis of (-20°C Ethanol) fixed HeLa cells using FGFR2 antibody (13042-1-AP) at dilution of 1:400 and CoraLite®488-Conjugated AffiniPure Goat Anti-Rabbit IgG(H+L) (SA00013-2).



1X10⁶ HepG2 cells were intracellularly stained with 0.8 ug Anti-Human FGFR2 (13042-1-AP) and CoraLite®488-Conjugated AffiniPure Goat Anti-Rabbit IgG(H+L) at dilution 1:1000 (red), or 0.8 ug Isotype Control. Cells were fixed with 4% PFA and permeabilized with Flow Cytometry Perm Buffer (PF00011-C).