

For Research Use Only

ASPRV1 Polyclonal antibody

Catalog Number: 13052-1-AP



Basic Information

Catalog Number:

13052-1-AP

Size:

150ul , Concentration: 750 ug/ml by Nanodrop and 353 ug/ml by Bradford method using BSA as the standard;

Source:

Rabbit

Isotype:

IgG

Immunogen Catalog Number:

AG3719

GenBank Accession Number:

BC031997

GeneID (NCBI):

151516

UNIPROT ID:

Q53RT3

Full Name:

aspartic peptidase, retroviral-like 1

Calculated MW:

343 aa, 37 kDa

Observed MW:

28 kDa, 37 kDa

Purification Method:

Antigen affinity purification

Recommended Dilutions:

WB 1:500-1:2000

Applications

Tested Applications:

WB, ELISA

Species Specificity:

human, mouse, rat

Positive Controls:

WB : mouse skin tissue, mouse brain tissue

Background Information

The human retroviral-like aspartic protease 1 (ASPRV1) is a mammalian retroviral-like enzyme that catalyzes a critical proteolytic step during epidermal differentiation; therefore, it is also referred to as skin-specific aspartic protease (SASPase).

Storage

Storage:

Store at -20°C. Stable for one year after shipment.

Storage Buffer:

PBS with 0.02% sodium azide and 50% glycerol pH 7.3.

Aliquoting is unnecessary for -20°C storage

*** 20ul sizes contain 0.1% BSA

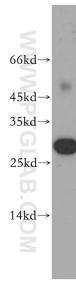
For technical support and original validation data for this product please contact:

T: 1 (888) 4PTGLAB (1-888-478-4522) (toll free in USA), or 1(312) 455-8498 (outside USA)

E: proteintech@ptglab.com
W: ptglab.com

This product is exclusively available under Proteintech Group brand and is not available to purchase from any other manufacturer.

Selected Validation Data



mouse skin tissue were subjected to SDS PAGE followed by western blot with 13052-1-AP (ASPRV1 antibody) at dilution of 1:300 incubated at room temperature for 1.5 hours.