

For Research Use Only

ASPRV1 Polyclonal antibody, PBS Only

Catalog Number: 13052-1-PBS



Basic Information

Catalog Number:

13052-1-PBS

Size:

100ug, Concentration: 1 mg/ml by Nanodrop;

Source:

Rabbit

Isotype:

IgG

Immunogen Catalog Number:

AG3719

GenBank Accession Number:

BC031997

GeneID (NCBI):

151516

UNIPROT ID:

Q53RT3

Full Name:

aspartic peptidase, retroviral-like 1

Calculated MW:

343 aa, 37 kDa

Observed MW:

28 kDa, 37 kDa

Purification Method:

Antigen affinity purification

Applications

Tested Applications:

WB, Indirect ELISA

Species Specificity:

human, mouse, rat

Background Information

The human retroviral-like aspartic protease 1 (ASPRV1) is a mammalian retroviral-like enzyme that catalyzes a critical proteolytic step during epidermal differentiation; therefore, it is also referred to as skin-specific aspartic protease (SASPase).

Storage

Storage:

Store at -80°C.

Storage Buffer:

PBS only, pH7.3

For technical support and original validation data for this product please contact:

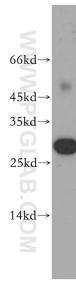
T: 1 (888) 4PTGLAB (1-888-478-4522) (toll free in USA), or 1(312) 455-8498 (outside USA)

E: proteintech@ptglab.com

W: ptglab.com

This product is exclusively available under Proteintech Group brand and is not available to purchase from any other manufacturer.

Selected Validation Data



mouse skin tissue were subjected to SDS PAGE followed by western blot with 13052-1-AP (ASPRV1 antibody) at dilution of 1:300 incubated at room temperature for 1.5 hours. This data was developed using the same antibody clone with 13052-1-PBS in a different storage buffer formulation.