

For Research Use Only

PFDN2 Polyclonal antibody

Catalog Number: 13053-1-AP



Basic Information

Catalog Number: 13053-1-AP	GenBank Accession Number: BC012464	Purification Method: Antigen affinity purification
Size: 150ul , Concentration: 450 µg/ml by Nanodrop and 233 µg/ml by Bradford method using BSA as the standard;	GeneID (NCBI): 5202	Recommended Dilutions: WB 1:200-1:1000 IHC 1:20-1:200 IF 1:20-1:200
Source: Rabbit	Full Name: prefoldin subunit 2	
Isotype: IgG	Calculated MW: 154 aa, 17 kDa	
Immunogen Catalog Number: AG3720	Observed MW: 17-20 kDa	

Applications

Tested Applications:

IF, IHC, WB, ELISA

Species Specificity:

human, mouse

Note-IHC: suggested antigen retrieval with TE buffer pH 9.0; (*) Alternatively, antigen retrieval may be performed with citrate buffer pH 6.0

Positive Controls:

WB : L02 cells, Neuro-2a cells

IHC : human lung cancer tissue, human liver cancer tissue

IF : L02 cells,

Background Information

Storage

Storage:

Store at -20°C. Stable for one year after shipment.

Storage Buffer:

PBS with 0.02% sodium azide and 50% glycerol pH 7.3.

Aliquoting is unnecessary for -20°C storage

*** 20ul sizes contain 0.1% BSA

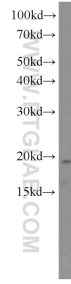
For technical support and original validation data for this product please contact:

T: 1 (888) 4PTGLAB (1-888-478-4522) (toll free in USA), or 1(312) 455-8498 (outside USA)

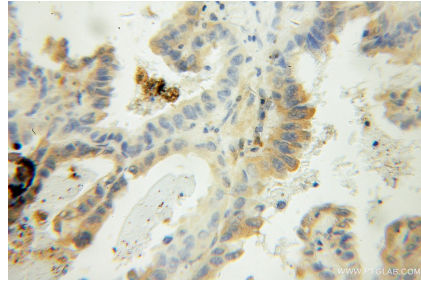
E: proteintech@ptglab.com
W: ptglab.com

This product is exclusively available under Proteintech Group brand and is not available to purchase from any other manufacturer.

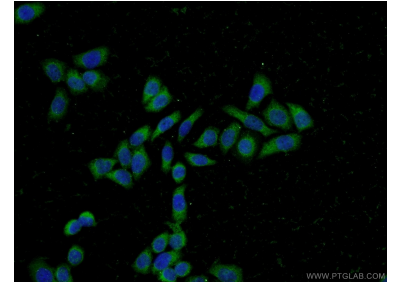
Selected Validation Data



L02 cells were subjected to SDS PAGE followed by western blot with 13053-1-AP (PFDN2 antibody) at dilution of 1:300 incubated at room temperature for 1.5 hours.



Immunohistochemical analysis of paraffin-embedded human lung cancer using 13053-1-AP (PFDN2 antibody) at dilution of 1:100 (under 10x lens).



Immunofluorescent analysis of L02 cells using 13053-1-AP (PFDN2 antibody) at dilution of 1:50 and Alexa Fluor 488-conjugated AffiniPure Goat Anti-Rabbit IgG(H+L).