

For Research Use Only

LXN Polyclonal antibody

Catalog Number: 13056-1-AP

4 Publications



Basic Information

Catalog Number:

13056-1-AP

Size:

150ul, Concentration: 450 ug/ml by Nanodrop and 233 ug/ml by Bradford method using BSA as the standard;

Source:

Rabbit

Isotype:

IgG

Immunogen Catalog Number:

AG3726

GenBank Accession Number:

BC005346

GeneID (NCBI):

56925

UNIPROT ID:

Q9BS40

Full Name:

latexin

Calculated MW:

222 aa, 26 kDa

Observed MW:

26 kDa

Purification Method:

Antigen affinity purification

Recommended Dilutions:

WB 1:500-1:2000

IP 0.5-4.0 ug for 1.0-3.0 mg of total protein lysate

IHC 1:50-1:500

Applications

Tested Applications:

WB, IHC, IP, ELISA

Cited Applications:

WB, IF

Species Specificity:

human, mouse, rat

Cited Species:

mouse

Note-IHC: suggested antigen retrieval with TE buffer pH 9.0; (*) Alternatively, antigen retrieval may be performed with citrate buffer pH 6.0

Positive Controls:

WB : mouse lung tissue,

IP : mouse lung tissue,

IHC : human intrahepatic cholangiocarcinoma tissue,

Background Information

Latexin, also named as LTXN, LXN, ECI, MUM and TCI, is hardly reversible, non-competitive, and potent inhibitor of CPA1, CPA2 and CPA4. It may function as a neuroprotective mechanism against tau toxicity.

Notable Publications

Author	Pubmed ID	Journal	Application
Lingzhu Wang	39208900	Int J Biol Macromol	WB,IF
Timothy M O'Shea	38907165	Nat Neurosci	IF
Xiaojing Cui	36933218	Cell Rep	WB

Storage

Storage:

Store at -20°C. Stable for one year after shipment.

Storage Buffer:

PBS with 0.02% sodium azide and 50% glycerol pH 7.3.

Aliquoting is unnecessary for -20°C storage

*** 20ul sizes contain 0.1% BSA

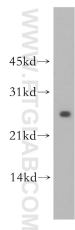
For technical support and original validation data for this product please contact:

T: 1 (888) 4PTGLAB (1-888-478-4522) (toll free in USA), or 1(312) 455-8498 (outside USA)

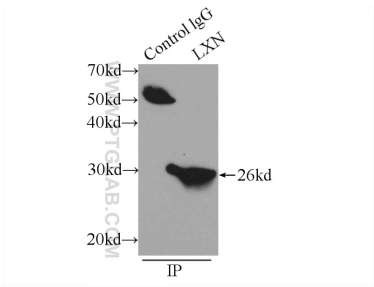
E: proteintech@ptglab.com
W: ptglab.com

This product is exclusively available under Proteintech Group brand and is not available to purchase from any other manufacturer.

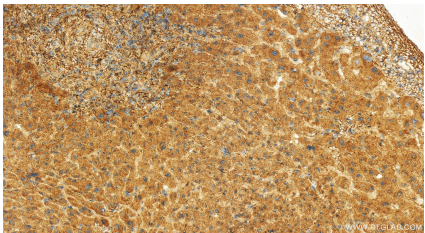
Selected Validation Data



mouse lung tissue were subjected to SDS PAGE followed by western blot with 13056-1-AP (LXN antibody) at dilution of 1:500 incubated at room temperature for 1.5 hours.



IP result of anti-LXN (IP:13056-1-AP, 4ug; Detection:13056-1-AP 1:500) with mouse lung tissue lysate 5160ug.



Immunohistochemical analysis of paraffin-embedded human intrahepatic cholangiocarcinoma tissue slide using 13056-1-AP (LXN antibody) at dilution of 1:200 (under 20x lens). Heat mediated antigen retrieval with Tris-EDTA buffer (pH 9.0).