

For Research Use Only

# MACF1 Polyclonal antibody

Catalog Number: 13058-1-AP

Featured Product

8 Publications



## Basic Information

<b>Catalog Number:</b> 13058-1-AP	<b>GenBank Accession Number:</b> BC007330	<b>Purification Method:</b> Antigen affinity purification
<b>Size:</b> 150ul , Concentration: 550 µg/ml by Nanodrop;	<b>GeneID (NCBI):</b> 23499	<b>Recommended Dilutions:</b> IHC 1:50-1:500 IF 1:50-1:100
<b>Source:</b> Rabbit	<b>UNIPROT ID:</b> Q9UPN3	
<b>Isotype:</b> IgG	<b>Full Name:</b> microtubule-actin crosslinking factor 1	
<b>Immunogen Catalog Number:</b> AG3730	<b>Calculated MW:</b> 5430 aa, 620 kDa	
	<b>Observed MW:</b> 600 kDa	

## Applications

### Tested Applications:

IF, IHC, ELISA

### Cited Applications:

WB, IHC

### Species Specificity:

human, mouse

### Cited Species:

human, mouse

**Note-IHC: suggested antigen retrieval with TE buffer pH 9.0; (\*) Alternatively, antigen retrieval may be performed with citrate buffer pH 6.0**

### Positive Controls:

IHC : human lung tissue, human skeletal muscle tissue, human heart tissue

IF : RPE cells, NIH/3T3 cells, U-251 cells

## Background Information

MACF1, also called ACF7 (actin crosslinking family 7), is a member of the spectraplakin family and is a ubiquitously expressed 614 kDa protein. This protein facilitates actin-microtubule interactions at the cell periphery and couples the microtubule network to cellular junctions. It displays a conserved role in membrane protrusion formation during evolution. The two major MACF1 isoforms characterized to date, MACF1a and MACF1b, result from alternative splicing. Both proteins contain N-terminal actin-binding domains (ABD), followed by plakin domains, extended spectrin repeat domains, EF-hand motifs, and C-terminal microtubule-binding domains (MTBDs). MACF1 is expressed in numerous tissue, including the skin, brain, skeletal muscle, and heart.

## Notable Publications

Author	Pubmed ID	Journal	Application
Ying Hsu	29049287	PLoS Genet	WB
Qian Yao	29312635	Oncotarget	WB
Lifang Hu	33664480	Cell Death Differ	WB

## Storage

### Storage:

Store at -20°C. Stable for one year after shipment.

### Storage Buffer:

PBS with 0.02% sodium azide and 50% glycerol pH 7.3.

Aliquoting is unnecessary for -20°C storage

\*\*\* 20ul sizes contain 0.1% BSA

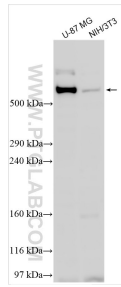
For technical support and original validation data for this product please contact:

T: 1 (888) 4PTGLAB (1-888-478-4522) (toll free in USA), or 1(312) 455-8498 (outside USA)

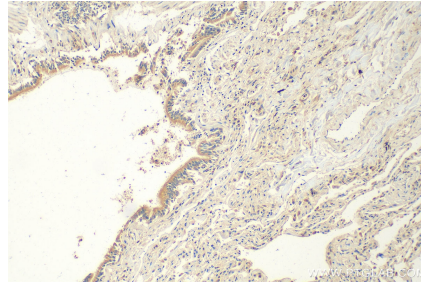
E: proteintech@ptglab.com  
W: ptglab.com

This product is exclusively available under Proteintech Group brand and is not available to purchase from any other manufacturer.

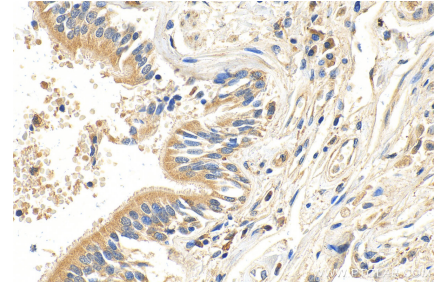
## Selected Validation Data



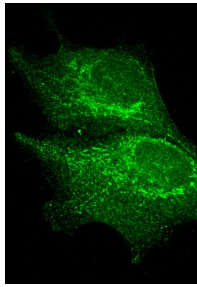
Various lysates were subjected to SDS PAGE followed by western blot with 13058-1-AP (MACF1 antibody) at dilution of 1:1500 incubated at room temperature for 1.5 hours.



Immunohistochemical analysis of paraffin-embedded human lung tissue slide using 13058-1-AP (MACF1 antibody) at dilution of 1:200 (under 10x lens). Heat mediated antigen retrieval with Tris-EDTA buffer (pH 9.0).



Immunohistochemical analysis of paraffin-embedded human lung tissue slide using 13058-1-AP (MACF1 antibody) at dilution of 1:200 (under 40x lens). Heat mediated antigen retrieval with Tris-EDTA buffer (pH 9.0).



IF results (golgi stain) of MACF1 antibody(13058-1-AP) (1:100) with RPE cells (fixed with 4% formaldehyde) by O'Neil Wiggan, Colorado State Univ.