

For Research Use Only

SLC1A4 Polyclonal antibody

Catalog Number: 13067-2-AP **4 Publications**



Basic Information

Catalog Number: 13067-2-AP	GenBank Accession Number: BC026216	Purification Method: Antigen affinity purification
Size: 150ul, Concentration: 650 µg/ml by Nanodrop and 413 µg/ml by Bradford method using BSA as the standard;	GeneID (NCBI): 6509	Recommended Dilutions: WB 1:2000-1:10000 IP 0.5-4.0 ug for IP and 1:500-1:2000 for WB
Source: Rabbit	Full Name: solute carrier family 1 (glutamate/neutral amino acid transporter), member 4	IHC 1:250-1:1000
Isotype: IgG	Calculated MW: 532 aa, 56 kDa	
Immunogen Catalog Number: AG3763	Observed MW: 62-70 kDa	

Applications

Tested Applications:

IHC, IP, WB, ELISA

Cited Applications:

WB

Species Specificity:

human, mouse, rat

Cited Species:

human, mouse

Note-IHC: suggested antigen retrieval with TE buffer pH 9.0; (*) Alternatively, antigen retrieval may be performed with citrate buffer pH 6.0

Positive Controls:

WB: Raji cells, mouse brain tissue, human skeletal muscle tissue, SW480 cells, mouse kidney tissue, rat brain tissue

IP: mouse brain tissue,

IHC: mouse kidney tissue, human kidney tissue, mouse brain tissue

Background Information

Notable Publications

Author	Pubmed ID	Journal	Application
Xin Liu	34496888	Mol Cancer	WB
Xiaozhen Peng	33777811	Front Oncol	WB
Megan L Ratz	37162879	Res Sq	WB

Storage

Storage:

Store at -20°C. Stable for one year after shipment.

Storage Buffer:

PBS with 0.02% sodium azide and 50% glycerol pH 7.3.

Aliquoting is unnecessary for -20°C storage

*** 20ul sizes contain 0.1% BSA

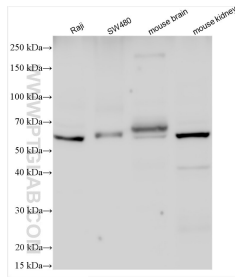
For technical support and original validation data for this product please contact:

T: 1 (888) 4PTGLAB (1-888-478-4522) (toll free in USA), or 1(312) 455-8498 (outside USA)

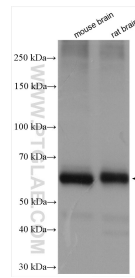
E: proteintech@ptglab.com
W: ptglab.com

This product is exclusively available under Proteintech Group brand and is not available to purchase from any other manufacturer.

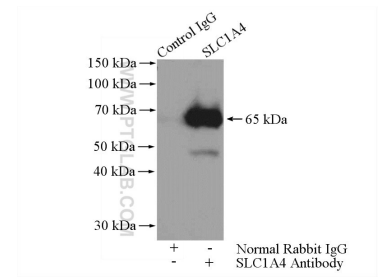
Selected Validation Data



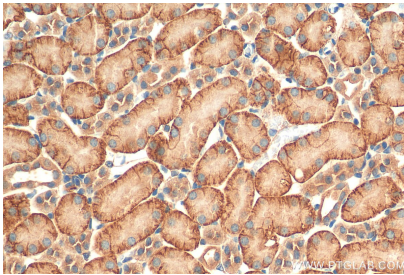
Various lysates were subjected to SDS PAGE followed by western blot with 13067-2-AP (SLC1A4 antibody) at dilution of 1:5000 incubated at room temperature for 1.5 hours.



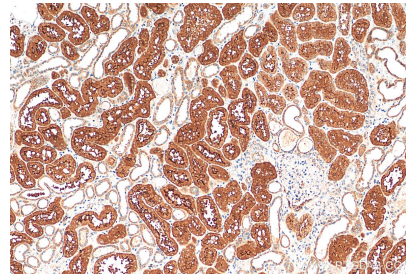
Various lysates were subjected to SDS PAGE followed by western blot with 13067-2-AP (SLC1A4 antibody) at dilution of 1:2000 incubated at room temperature for 1.5 hours.



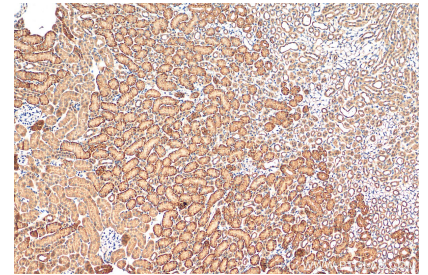
IP Result of anti-SLC1A4 (IP:13067-2-AP, 4ug; Detection:13067-2-AP 1:1000) with mouse brain tissue lysate 4000ug.



Immunohistochemical analysis of paraffin-embedded mouse kidney tissue slide using 13067-2-AP (SLC1A4 antibody) at dilution of 1:500 (under 40x lens). Heat mediated antigen retrieval with Tris-EDTA buffer (pH 9.0).



Immunohistochemical analysis of paraffin-embedded human kidney tissue slide using 13067-2-AP (SLC1A4 antibody) at dilution of 1:500 (under 10x lens). Heat mediated antigen retrieval with Tris-EDTA buffer (pH 9.0).



Immunohistochemical analysis of paraffin-embedded mouse kidney tissue slide using 13067-2-AP (SLC1A4 antibody) at dilution of 1:500 (under 10x lens). Heat mediated antigen retrieval with Tris-EDTA buffer (pH 9.0).