

For Research Use Only

SLC25A32 Polyclonal antibody

Catalog Number: 13080-1-AP

Featured Product

1 Publications



Basic Information

Catalog Number: 13080-1-AP	GenBank Accession Number: BC021893	Purification Method: Antigen affinity purification
Size: 150ul , Concentration: 500 µg/ml by Nanodrop and 350 µg/ml by Bradford method using BSA as the standard;	GeneID (NCBI): 81034	Recommended Dilutions: WB 1:500-1:2000 IHC 1:200-1:800
Source: Rabbit	Full Name: solute carrier family 25, member 32	
Isotype: IgG	Calculated MW: 315 aa, 35 kDa	
Immunogen Catalog Number: AG3722	Observed MW: 35-40 kDa	

Applications

Tested Applications: IHC, WB, ELISA	Positive Controls: WB : HeLa cells, K-562 cells, MCF-7 cells
Cited Applications: IHC, WB	IHC : human prostate cancer tissue,
Species Specificity: human	
Cited Species: human	

Note-IHC: suggested antigen retrieval with TE buffer pH 9.0; (*) Alternatively, antigen retrieval may be performed with citrate buffer pH 6.0

Background Information

Solute carrier family 25 member 32 (SLC25A32) can transfer tetrahydrofolate (THF) from cellular cytoplasm to the mitochondria as a mitochondrial folate transporter (MFT). It has been reported that SLC25A32 can also transport FAD across the mitochondrial inner membrane. Chronic alcohol exposure affects mitochondrial folate uptake and may affect the transcription of the SLC25A32. And functional SLC25A32 defect is associated with the cranial neural tube defects (PMID: 21956163; 29666258)

Notable Publications

Author	Pubmed ID	Journal	Application
Zhiwei Xue	37365560	BMC Cancer	WB,IHC

Storage

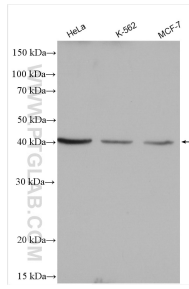
Storage:
Store at -20°C. Stable for one year after shipment.
Storage Buffer:
PBS with 0.02% sodium azide and 50% glycerol pH 7.3.
Aliquoting is unnecessary for -20°C storage

*** 20ul sizes contain 0.1% BSA

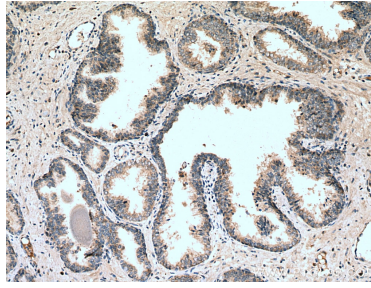
For technical support and original validation data for this product please contact:
T: 1 (888) 4PTGLAB (1-888-478-4522) (toll free in USA), or 1(312) 455-8498 (outside USA)
E: proteintech@ptglab.com
W: ptglab.com

This product is exclusively available under Proteintech Group brand and is not available to purchase from any other manufacturer.

Selected Validation Data



Various lysates were subjected to SDS PAGE followed by western blot with 13080-1-AP (SLC25A32 antibody) at dilution of 1:1000 incubated at room temperature for 1.5 hours.



Immunohistochemical analysis of paraffin-embedded human prostate cancer tissue slide using 13080-1-AP (SLC25A32 antibody) at dilution of 1:400 (under 10x lens). Heat mediated antigen retrieval with Tris-EDTA buffer (pH 9.0).