

For Research Use Only

FREM1 Polyclonal antibody

Catalog Number: 13086-1-AP

2 Publications



Basic Information

Catalog Number:

13086-1-AP

Size:

150ul, Concentration: 800 ug/ml by Nanodrop and 200 ug/ml by Bradford method using BSA as the standard;

Source:

Rabbit

Isotype:

IgG

Immunogen Catalog Number:

AG3617

GenBank Accession Number:

BC031064

GeneID (NCBI):

158326

UNIPROT ID:

Q5H8C1

Full Name:

FRAS1 related extracellular matrix 1

Calculated MW:

2179aa, 244 kDa, 149.3 kDa

Observed MW:

40-43 kDa, 70-80 kDa

Purification Method:

Antigen affinity purification

Recommended Dilutions:

WB 1:200-1:1000

IHC 1:20-1:200

IF/ICC 1:200-1:800

Applications

Tested Applications:

WB, IHC, IF/ICC, ELISA

Cited Applications:

WB, IHC

Species Specificity:

human

Cited Species:

human

Note-IHC: suggested antigen retrieval with TE buffer pH 9.0; (*) Alternatively, antigen retrieval may be performed with citrate buffer pH 6.0

Positive Controls:

WB : human plasma tissue, HepG2 cells

IHC : human liver cancer tissue, human breast cancer tissue

IF/ICC : HepG2 cells,

Background Information

FREM1, C9orf143, C9orf145, C9orf154 and QBRICK, is an extracellular matrix protein that plays a role in epidermal differentiation and is required for epidermal adhesion during embryonic development. This antibody recognizes isoform 1 (244 kDa), isoform 2 (80 kDa) and isoform 3 (43 kDa).

Notable Publications

Author	Pubmed ID	Journal	Application
Han-Ning Li	33058542	Cancer Med	IHC
Xiao-Yi Xu	33031059	Aging (Albany NY)	WB

Storage

Storage:

Store at -20°C. Stable for one year after shipment.

Storage Buffer:

PBS with 0.02% sodium azide and 50% glycerol pH 7.3.

Aliquoting is unnecessary for -20°C storage

*** 20ul sizes contain 0.1% BSA

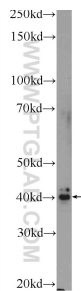
For technical support and original validation data for this product please contact:

T: 1 (888) 4PTGLAB (1-888-478-4522) (toll free in USA), or 1(312) 455-8498 (outside USA)

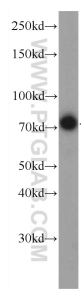
E: proteintech@ptglab.com
W: ptglab.com

This product is exclusively available under Proteintech Group brand and is not available to purchase from any other manufacturer.

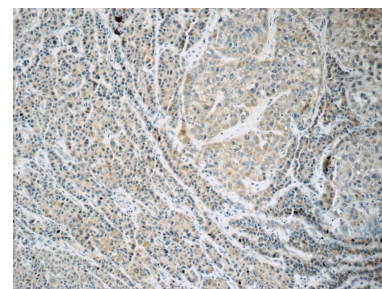
Selected Validation Data



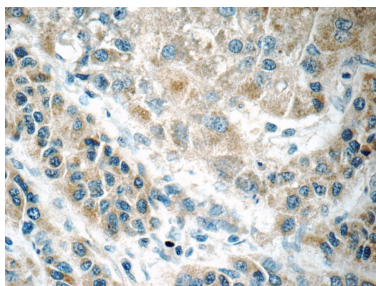
human plasma were subjected to SDS PAGE followed by western blot with 13086-1-AP (FREM1 Antibody) at dilution of 1:300 incubated at 4 degree celsius over night.



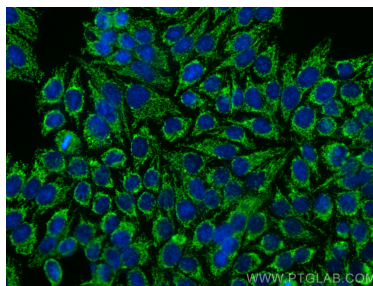
HepG2 cells were subjected to SDS PAGE followed by western blot with 13086-1-AP (FREM1 Antibody) at dilution of 1:300 incubated at 4 degree celsius over night.



Immunohistochemical analysis of paraffin-embedded human liver cancer tissue slide using 13086-1-AP (FREM1 Antibody) at dilution of 1:50 (under 10x lens).



Immunohistochemical analysis of paraffin-embedded human liver cancer tissue slide using 13086-1-AP (FREM1 Antibody) at dilution of 1:50 (under 40x lens).



Immunofluorescent analysis of (-20°C Ethanol) fixed HepG2 cells using FREM1 antibody (13086-1-AP) at dilution of 1:400 and CoraLite®488-Conjugated Goat Anti-Rabbit IgG(H+L) (SA00013-2).