

For Research Use Only

# FREM1 Polyclonal antibody, PBS Only

Catalog Number: 13086-1-PBS



## Basic Information

<b>Catalog Number:</b> 13086-1-PBS	<b>GenBank Accession Number:</b> BC031064	<b>Purification Method:</b> Antigen affinity purification
<b>Size:</b> 100ug, Concentration: 1 mg/ml by Nanodrop;	<b>GeneID (NCBI):</b> 158326	
<b>Source:</b> Rabbit	<b>UNIPROT ID:</b> Q5H8C1	
<b>Isotype:</b> IgG	<b>Full Name:</b> FRAS1 related extracellular matrix 1	
<b>Immunogen Catalog Number:</b> AG3617	<b>Calculated MW:</b> 2179aa, 244 kDa, 149.3 kDa	
	<b>Observed MW:</b> 40-43 kDa, 70-80 kDa	

## Applications

**Tested Applications:**  
WB, IHC, IF/ICC, Indirect ELISA

**Species Specificity:**  
human

## Background Information

FREM1, C9orf143, C9orf145, C9orf154 and QBRICK, is an extracellular matrix protein that plays a role in epidermal differentiation and is required for epidermal adhesion during embryonic development. This antibody recognizes isoform 1 (244 kDa), isoform 2 (80 kDa) and isoform 3 (43 kDa).

## Storage

**Storage:**  
Store at -80°C.  
**Storage Buffer:**  
PBS Only

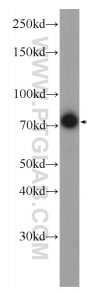
For technical support and original validation data for this product please contact:  
T: 1 (888) 4PTGLAB (1-888-478-4522) (toll free in USA), or 1(312) 455-8498 (outside USA)      E: [proteintech@ptglab.com](mailto:proteintech@ptglab.com)  
W: [ptglab.com](http://ptglab.com)

This product is exclusively available under Proteintech Group brand and is not available to purchase from any other manufacturer.

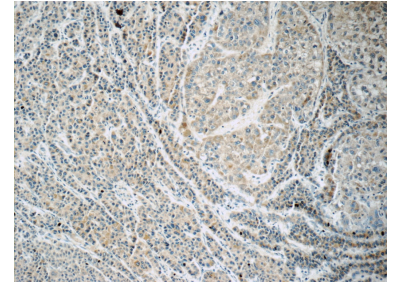
## Selected Validation Data



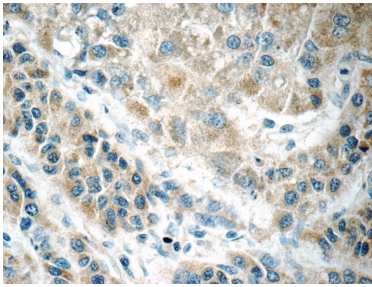
human plasma were subjected to SDS PAGE followed by western blot with 13086-1-AP (FREM1 Antibody) at dilution of 1:300 incubated at 4 degree celsius over night. This data was developed using the same antibody clone with 13086-1-PBS in a different storage buffer formulation.



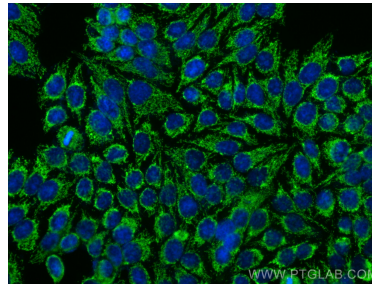
HepG2 cells were subjected to SDS PAGE followed by western blot with 13086-1-AP (FREM1 Antibody) at dilution of 1:300 incubated at 4 degree celsius over night. This data was developed using the same antibody clone with 13086-1-PBS in a different storage buffer formulation.



Immunohistochemical analysis of paraffin-embedded human liver cancer tissue slide using 13086-1-AP (FREM1 Antibody) at dilution of 1:50 (under 10x lens). This data was developed using the same antibody clone with 13086-1-PBS in a different storage buffer formulation.



Immunohistochemical analysis of paraffin-embedded human liver cancer tissue slide using 13086-1-AP (FREM1 Antibody) at dilution of 1:50 (under 40x lens). This data was developed using the same antibody clone with 13086-1-PBS in a different storage buffer formulation.



Immunofluorescent analysis of (-20°C Ethanol) fixed HepG2 cells using FREM1 antibody (13086-1-AP) at dilution of 1:400 and CoraLite® 488-Conjugated Goat Anti-Rabbit IgG(H+L) (SA00013-2). This data was developed using the same antibody clone with 13086-1-PBS in a different storage buffer formulation.