

For Research Use Only

# MITF Polyclonal antibody

Catalog Number: 13092-1-AP

35 Publications



## Basic Information

### Catalog Number:

13092-1-AP

### Size:

150ul, Concentration: 700 ug/ml by Nanodrop;

### Source:

Rabbit

### Isotype:

IgG

### Immunogen Catalog Number:

AG3679

### GenBank Accession Number:

BC012503

### GeneID (NCBI):

4286

### UNIPROT ID:

O75030

### Full Name:

microphthalmia-associated transcription factor

### Calculated MW:

91 aa, 10 kDa, 59 kDa

### Observed MW:

59-65 kDa

### Purification Method:

Antigen affinity purification

### Recommended Dilutions:

WB 1:500-1:3000

IP 0.5-4.0 ug for 1.0-3.0 mg of total protein lysate

## Applications

### Tested Applications:

WB, FC (Intra), IP, ELISA

### Cited Applications:

WB, IF

### Species Specificity:

human, mouse, rat

### Cited Species:

human, mouse, rat

### Positive Controls:

WB: A549 cells, Jurkat cells, mouse heart tissue, rat skin tissue, NIH/3T3 cells

IP: mouse heart tissue,

## Background Information

The retinal pigment epithelium (RPE) has a essential role in maintaining visual function and dedifferentiation of RPE contributes to the pathophysiology of several ocular diseases[PMID: 22523078]. Microphthalmia-associated transcription factor (MITF) is a key regulator of RPE differentiation that is also down-regulated in dedifferentiated hfRPE cells. MITF is a basic helix-loop-helix (hHLH)-leucine zipper protein that involves in the development of various cell types, including neural crest-derived melanocytes and optic cup-derived retinal pigment epithelial cells [PMID: 10578055].

## Notable Publications

Author	Pubmed ID	Journal	Application
Kaushal Asrani	31527310	J Clin Invest	WB
Bohee Jang	34650007	Mol Cells	WB
Haibin Tian	36185374	iScience	IF

## Storage

### Storage:

Store at -20°C. Stable for one year after shipment.

### Storage Buffer:

PBS with 0.02% sodium azide and 50% glycerol pH 7.3.

Aliquoting is unnecessary for -20°C storage

\*\*\* 20ul sizes contain 0.1% BSA

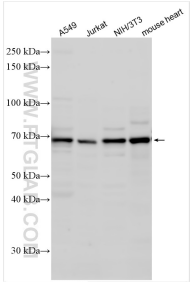
For technical support and original validation data for this product please contact:

T: 1 (888) 4PTGLAB (1-888-478-4522) (toll free in USA), or 1(312) 455-8498 (outside USA)

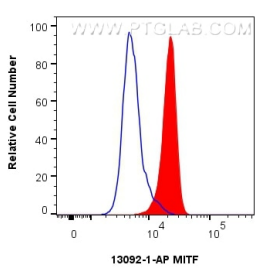
E: [proteintech@ptglab.com](mailto:proteintech@ptglab.com)  
W: [ptglab.com](http://ptglab.com)

This product is exclusively available under Proteintech Group brand and is not available to purchase from any other manufacturer.

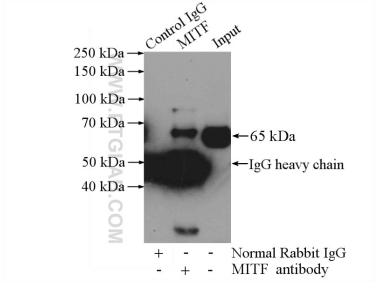
Selected Validation Data



Various lysates were subjected to SDS PAGE followed by western blot with 13092-1-AP (MITF antibody) at dilution of 1:1500 incubated at room temperature for 1.5 hours.



1x10<sup>6</sup> HeLa cells were intracellularly stained with 0.25 ug MITF Polyclonal antibody (13092-1-AP) and CoraLite®488-Conjugated Goat Anti-Rabbit IgG(H+L) (SA00013-2)(red), or 0.25 ug Rabbit IgG control Rabbit PolyAb (30000-0-AP) (blue). Cells were fixed and permeabilized with Transcription Factor Staining Buffer Kit (PF00011).



IP result of anti-MITF (IP:13092-1-AP, 4ug; Detection:13092-1-AP 1:1000) with mouse heart tissue lysate 4000ug.