

For Research Use Only

# TSEN2 Polyclonal antibody

Catalog Number: 13103-2-AP **3 Publications**



## Basic Information

<b>Catalog Number:</b> 13103-2-AP	<b>GenBank Accession Number:</b> BC019582	<b>Purification Method:</b> Antigen affinity purification
<b>Size:</b> 150ul , Concentration: 700 µg/ml by Nanodrop and 407 µg/ml by Bradford method using BSA as the standard;	<b>GeneID (NCBI):</b> 80746	<b>Recommended Dilutions:</b> WB 1:500-1:2000 IF 1:50-1:500
<b>Source:</b> Rabbit	<b>Full Name:</b> tRNA splicing endonuclease 2 homolog (S. cerevisiae)	
<b>Isotype:</b> IgG	<b>Calculated MW:</b> 465 aa, 51 kDa	
<b>Immunogen Catalog Number:</b> AG3742	<b>Observed MW:</b> 51 kDa	

## Applications

<b>Tested Applications:</b> IF, WB, ELISA	<b>Positive Controls:</b>
<b>Cited Applications:</b> WB	<b>WB :</b> mouse colon tissue, human brain tissue, mouse brain tissue
<b>Species Specificity:</b> mouse, human	<b>IF :</b> HeLa cells,
<b>Cited Species:</b> human	

## Background Information

TSEN2, also named as SEN2, belongs to the tRNA-intron endonuclease family. TSEN2 is a metal ion independent nuclease that cleave the 5' splice site (PMID: 32476018). TSEN2 has 5 isoforms with the molecular mass of 45-53 kDa. TSEN2 is involved in the formation of a human endonuclease complex whose function is the removal of introns from pre-tRNA (PMID: 16595010).

## Notable Publications

Author	Pubmed ID	Journal	Application
Martin W Breuss	27392077	Am J Hum Genet	WB
Ashleigh E Schaffer	24766810	Cell	WB
Jennifer E Hurtig	36943791	Genetics	WB

## Storage

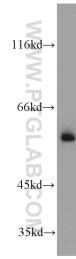
**Storage:**  
Store at -20°C. Stable for one year after shipment.  
**Storage Buffer:**  
PBS with 0.02% sodium azide and 50% glycerol pH 7.3.  
Aliquoting is unnecessary for -20°C storage

\*\*\* 20ul sizes contain 0.1% BSA

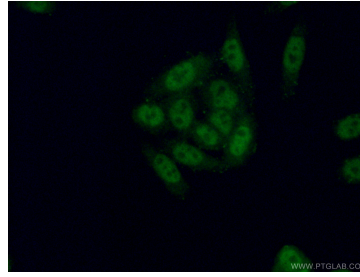
For technical support and original validation data for this product please contact:  
T: 1 (888) 4PTGLAB (1-888-478-4522) (toll free in USA), or 1(312) 455-8498 (outside USA) E: proteintech@ptglab.com W: ptglab.com

This product is exclusively available under Proteintech Group brand and is not available to purchase from any other manufacturer.

## Selected Validation Data



mouse colon tissue were subjected to SDS PAGE followed by western blot with 13103-2-AP (TSEN2 antibody) at dilution of 1:1000 incubated at room temperature for 1.5 hours.



Immunofluorescent analysis of (4% PFA) fixed HeLa cells using 13103-2-AP (TSEN2 antibody) at dilution of 1:50 and Alexa Fluor 488-conjugated AffiniPure Goat Anti-Rabbit IgG(H+L).