

For Research Use Only

KIF2A Polyclonal antibody

Catalog Number: 13105-1-AP

Featured Product

11 Publications



Basic Information

Catalog Number:
13105-1-AP

Size:
150ul, Concentration: 300 µg/ml by Nanodrop and 207 µg/ml by Bradford method using BSA as the standard;

Source:
Rabbit

Isotype:
IgG

Immunogen Catalog Number:
AG3748

GenBank Accession Number:
BC031828

GeneID (NCBI):
3796

Full Name:
kinesin heavy chain member 2A

Calculated MW:
679 aa, 77 kDa

Observed MW:
80-100 kDa

Purification Method:
Antigen affinity purification

Recommended Dilutions:
WB 1:1000-1:8000
IP 0.5-4.0 ug for IP and 1:500-1:2000 for WB
IHC 1:20-1:200
IF 1:250-1:1000

Applications

Tested Applications:
FC, IF, IHC, IP, WB, ELISA

Cited Applications:
IF, WB

Species Specificity:
human, mouse, rat, Canine

Cited Species:
human, mouse

Note-IHC: suggested antigen retrieval with TE buffer pH 9.0; (*) Alternatively, antigen retrieval may be performed with citrate buffer pH 6.0

Positive Controls:

WB: HeLa cells, mouse brain tissue, rat brain tissue

IP: mouse brain tissue,

IHC: human breast cancer tissue,

IF: A549 cells, MDCK cells

Background Information

Notable Publications

| Author | Pubmed ID | Journal | Application |
|--------------|-----------|---------------------|-------------|
| Tianyu Wu | 36395215 | Science | IF |
| Junjie Huang | 34137789 | J Cell Biol | WB, IF |
| Xin Zhang | 32106376 | Biomed Pharmacother | WB |

Storage

Storage:

Store at -20°C. Stable for one year after shipment.

Storage Buffer:

PBS with 0.02% sodium azide and 50% glycerol pH 7.3.

Aliquoting is unnecessary for -20°C storage

*** 20ul sizes contain 0.1% BSA

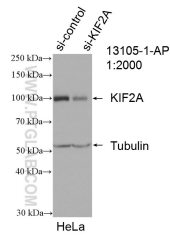
For technical support and original validation data for this product please contact:

T: 1 (888) 4PTGLAB (1-888-478-4522) (toll free in USA), or 1(312) 455-8498 (outside USA)

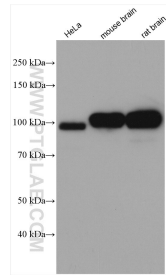
E: proteintech@ptglab.com
W: ptglab.com

This product is exclusively available under Proteintech Group brand and is not available to purchase from any other manufacturer.

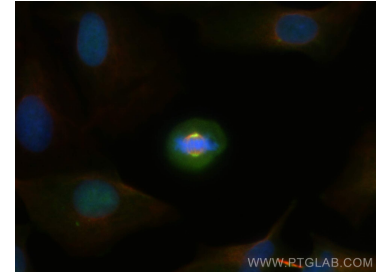
Selected Validation Data



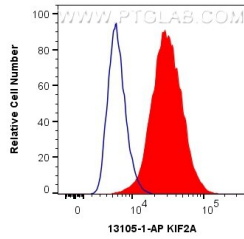
WB result of KIF2A antibody (13105-1-AP; 1:3000; incubated at room temperature for 1.5 hours) with sh-Control and sh-KIF2A transfected HeLa cells.



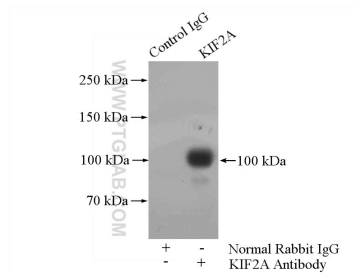
Various lysates were subjected to SDS PAGE followed by western blot with 13105-1-AP (KIF2A antibody) at dilution of 1:4000 incubated at room temperature for 1.5 hours.



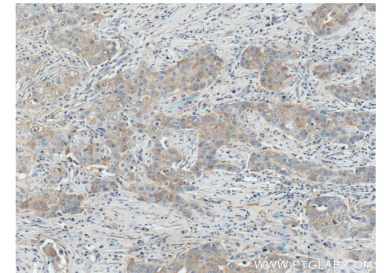
Immunofluorescent analysis of (4% PFA) fixed A549 cells using KIF2A antibody (13105-1-AP) at dilution of 1:500 and CoraLite@488-Conjugated AffiniPure Goat Anti-Rabbit IgG(H+L), Alpha Tubulin antibody (66031-1-Ig, Clone: 1E4C11, red).



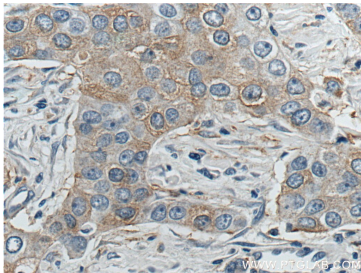
1X10⁶ A549 cells were intracellularly stained with 0.4 ug Anti-Human KIF2A (13105-1-AP) and CoraLite@488-Conjugated AffiniPure Goat Anti-Rabbit IgG(H+L) at dilution 1:1000 (red), or 0.4 ug Isotype Control. Cells were fixed with 4% PFA and permeabilized with Flow Cytometry Perm Buffer (PF00011-C).



IP Result of anti-KIF2A (IP:13105-1-AP, 4ug; Detection:13105-1-AP 1:1000) with mouse brain tissue lysate 4000ug.



Immunohistochemical analysis of paraffin-embedded human breast cancer tissue slide using 13105-1-AP (KIF2A Antibody) at dilution of 1:200 (under 10x lens).



Immunohistochemical analysis of paraffin-embedded human breast cancer tissue slide using 13105-1-AP (KIF2A Antibody) at dilution of 1:200 (under 40x lens).