

For Research Use Only

MTHFS Polyclonal antibody

Catalog Number: 13114-1-AP



Basic Information

Catalog Number: 13114-1-AP	GenBank Accession Number: BC019921	Purification Method: Antigen affinity purification
Size: 150ul, Concentration: 240 µg/ml by Nanodrop and 140 µg/ml by Bradford method using BSA as the standard;	GeneID (NCBI): 10588	Recommended Dilutions: WB 1:1000-1:5000 IHC 1:20-1:200
Source: Rabbit	Full Name: 5,10-methenyltetrahydrofolate synthetase (5-formyltetrahydrofolate cyclo-ligase)	
Isotype: IgG	Calculated MW: 203 aa, 23 kDa	
Immunogen Catalog Number: AG3781	Observed MW: 23 kDa	

Applications

Tested Applications:

IHC, WB, ELISA

Species Specificity:

human, mouse, rat

Note-IHC: suggested antigen retrieval with TE buffer pH 9.0; (*) Alternatively, antigen retrieval may be performed with citrate buffer pH 6.0

Positive Controls:

WB : HeLa cells, human liver tissue, Jurkat cells, human stomach tissue, U-937 cells, L02 cells

IHC : human liver cancer tissue,

Background Information

Storage

Storage:

Store at -20°C. Stable for one year after shipment.

Storage Buffer:

PBS with 0.02% sodium azide and 50% glycerol pH 7.3.

Aliquoting is unnecessary for -20°C storage

*** 20ul sizes contain 0.1% BSA

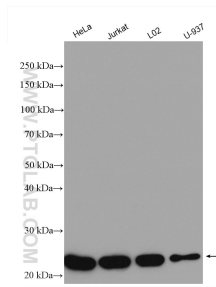
For technical support and original validation data for this product please contact:

T: 1 (888) 4PTGLAB (1-888-478-4522) (toll free in USA), or 1(312) 455-8498 (outside USA)

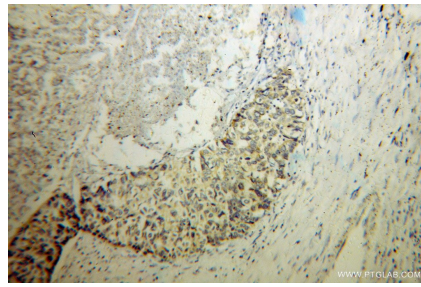
E: proteintech@ptglab.com
W: ptglab.com

This product is exclusively available under Proteintech Group brand and is not available to purchase from any other manufacturer.

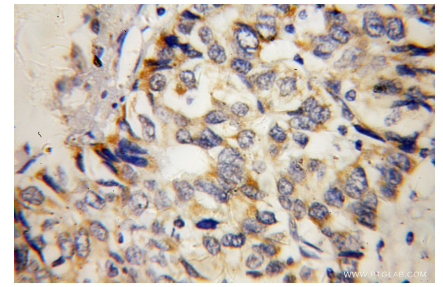
Selected Validation Data



Various lysates were subjected to SDS PAGE followed by western blot with 13114-1-AP (MTHFS antibody) at dilution of 1:2500 incubated at room temperature for 1.5 hours.



Immunohistochemical analysis of paraffin-embedded human liver cancer using 13114-1-AP (MTHFS antibody) at dilution of 1:100 (under 10x lens).



Immunohistochemical analysis of paraffin-embedded human liver cancer using 13114-1-AP (MTHFS antibody) at dilution of 1:100 (under 40x lens).