

For Research Use Only

MTHFS Polyclonal antibody, PBS Only

Catalog Number: 13114-1-PBS



Basic Information

Catalog Number:

13114-1-PBS

Size:

100ug, Concentration: 1 mg/ml by Nanodrop;

Source:

Rabbit

Isotype:

IgG

Immunogen Catalog Number:

AG3781

GenBank Accession Number:

BC019921

GeneID (NCBI):

10588

UNIPROT ID:

P49914

Full Name:

5,10-methenyltetrahydrofolate synthetase (5-formyltetrahydrofolate cyclo-ligase)

Calculated MW:

203 aa, 23 kDa

Observed MW:

23 kDa

Purification Method:

Antigen affinity purification

Applications

Tested Applications:

WB, IHC, IP, Indirect ELISA

Species Specificity:

human, mouse, rat

Storage

Storage:

Store at -80°C.

Storage Buffer:

PBS Only

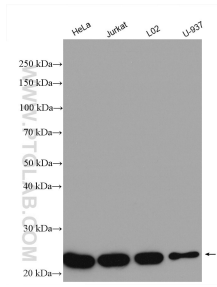
For technical support and original validation data for this product please contact:

T: 1 (888) 4PTGLAB (1-888-478-4522) (toll free in USA), or 1(312) 455-8498 (outside USA)

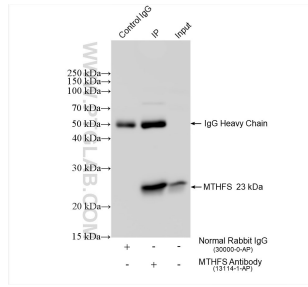
E: proteintech@ptglab.com
W: ptglab.com

This product is exclusively available under Proteintech Group brand and is not available to purchase from any other manufacturer.

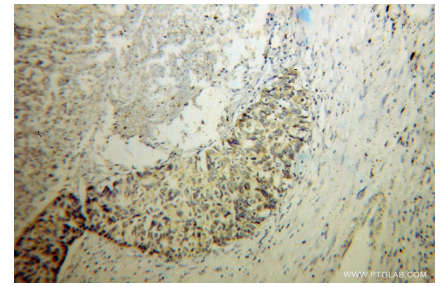
Selected Validation Data



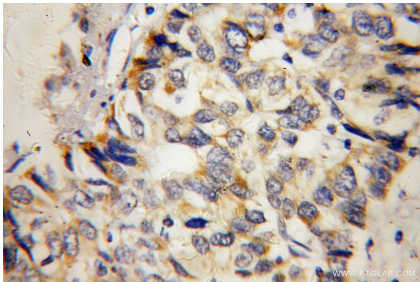
Various lysates were subjected to SDS PAGE followed by western blot with 13114-1-AP (MTHFS antibody) at dilution of 1:2500 incubated at room temperature for 1.5 hours. This data was developed using the same antibody clone with 13114-1-PBS in a different storage buffer formulation.



IP result of anti-MTHFS (IP:13114-1-AP, 4ug; Detection:13114-1-AP 1:2000) with HeLa cells lysate 1200 ug. This data was developed using the same antibody clone with 13114-1-PBS in a different storage buffer formulation.



Immunohistochemical analysis of paraffin-embedded human liver cancer using 13114-1-AP (MTHFS antibody) at dilution of 1:100 (under 10x lens). This data was developed using the same antibody clone with 13114-1-PBS in a different storage buffer formulation.



Immunohistochemical analysis of paraffin-embedded human liver cancer using 13114-1-AP (MTHFS antibody) at dilution of 1:100 (under 40x lens). This data was developed using the same antibody clone with 13114-1-PBS in a different storage buffer formulation.