

For Research Use Only

PDE1B Polyclonal antibody

Catalog Number:13121-1-AP



Basic Information

Catalog Number:

13121-1-AP

Size:

150ul , Concentration: 500 ug/ml by Nanodrop;

Source:

Rabbit

Isotype:

IgG

Immunogen Catalog Number:

AG3817

GenBank Accession Number:

BC032226

GeneID (NCBI):

5153

UNIPROT ID:

Q01064

Full Name:

phosphodiesterase 1B, calmodulin-dependent

Calculated MW:

536 aa, 61 kDa

Observed MW:

61 kDa

Purification Method:

Antigen affinity purification

Recommended Dilutions:

WB 1:1000-1:8000

Applications

Tested Applications:

WB, ELISA

Species Specificity:

mouse, rat

Positive Controls:

WB : mouse brain tissue, rat brain tissue, mouse cerebellum tissue

Background Information

PDE1B, also known as PDE51B, belongs to the cyclic nucleotide phosphodiesterase family and PDE1 subfamily. PDE1B degrades cAMP and cGMP and regulates various important physiological processes such as proliferation and lipogenesis (PMID: 21960012). PDE1B is enriched in brain tissue. PDE1B gene consists of two isoforms, PDE1B1 (encoding 61 kDa protein with 536 amino acid residues) and PDE1B2 (encoding 59 kDa protein containing 516 amino acid residues).

Storage

Storage:

Store at -20°C. Stable for one year after shipment.

Storage Buffer:

PBS with 0.02% sodium azide and 50% glycerol pH 7.3.

Aliquoting is unnecessary for -20°C storage

*** 20ul sizes contain 0.1% BSA

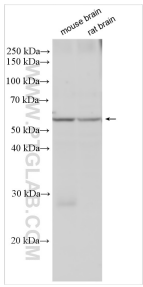
For technical support and original validation data for this product please contact:

T: 1 (888) 4PTGLAB (1-888-478-4522) (toll free in USA), or 1(312) 455-8498 (outside USA)

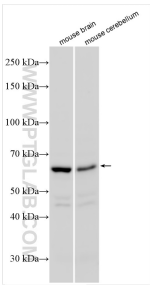
E: proteintech@ptglab.com
W: ptglab.com

This product is exclusively available under Proteintech Group brand and is not available to purchase from any other manufacturer.

Selected Validation Data



Various lysates were subjected to SDS PAGE followed by western blot with 13121-1-AP (PDE1B antibody) at dilution of 1:4000 incubated at room temperature for 1.5 hours.



Various lysates were subjected to SDS PAGE followed by western blot with 13121-1-AP (PDE1B antibody) at dilution of 1:2000 incubated at room temperature for 1.5 hours.