

For Research Use Only

PPP2R2B/A/C/D Polyclonal antibody



Catalog Number: 13123-1-AP

2 Publications

Basic Information

Catalog Number: 13123-1-AP	GenBank Accession Number: BC031790	Purification Method: Antigen affinity purification
Size: 150ul , Concentration: 200 µg/ml by Nanodrop and 140 µg/ml by Bradford method using BSA as the standard;	GeneID (NCBI): 5521	Recommended Dilutions: WB 1:500-1:3000 IP 0.5-4.0 ug for 1.0-3.0 mg of total protein lysate
Source: Rabbit	Full Name: protein phosphatase 2 (formerly 2A), regulatory subunit B, beta isoform	IHC 1:50-1:500 IF 1:200-1:800
Isotype: IgG	Calculated MW: 443 aa, 52 kDa	
Immunogen Catalog Number: AG3860	Observed MW: 52 kDa	

Applications

Tested Applications:
IF, IHC, IP, WB, ELISA

Cited Applications:
CoIP, IF, IHC, WB

Species Specificity:
human, mouse, rat

Cited Species:
human

Note-IHC: suggested antigen retrieval with TE buffer pH 9.0; (*) Alternatively, antigen retrieval may be performed with citrate buffer pH 6.0

Positive Controls:

WB : HeLa cells, SH-SY5Y cells, MCF-7 cells, mouse brain tissue, HepG2 cells, fetal human brain tissue, rat brain tissue, Jurkat cells

IP : SH-SY5Y cells,

IHC : mouse brain tissue,

IF : SH-SY5Y cells,

Background Information

The PPP2R2B gene encodes a deduced 443-amino acid protein of approximately 52 kDa, which is a brain-specific regulatory subunit B of protein phosphatase 2. PPP2R2B is a Subunit of PP2A, a highly conserved constitutive enzyme (PMID:11719278). PPP2R2B (Bβ) is an important regulator of protein phosphatase 2A (PP2A) activity in the brain. Through differential promoter usage and alternative splicing, two major isoforms Bβ1 and Bβ2 with divergent sub-cellular targeting N termini are produced. Bβ plays an important role in neuronal survival. It has 5 isoforms produced by alternative splicing. This antibody has cross-reactivity to PPP2R2A, PPP2R2C and PPP2R2D.

Notable Publications

Author	Pubmed ID	Journal	Application
Zheng Li	33407498	Cancer Cell Int	WB, IHC, IF
Mingyu Hu	36250210	Mol Ther Nucleic Acids	WB, CoIP

Storage

Storage:

Store at -20°C. Stable for one year after shipment.

Storage Buffer:

PBS with 0.02% sodium azide and 50% glycerol pH 7.3.

Aliquoting is unnecessary for -20°C storage

*** 20ul sizes contain 0.1% BSA

For technical support and original validation data for this product please contact:

T: 1 (888) 4PTGLAB (1-888-478-4522) (toll free in USA), or 1(312) 455-8498 (outside USA)

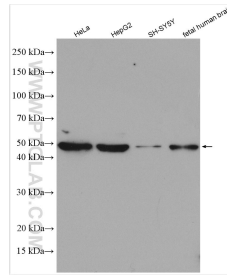
E: proteintech@ptglab.com
W: ptglab.com

This product is exclusively available under Proteintech Group brand and is not available to purchase from any other manufacturer.

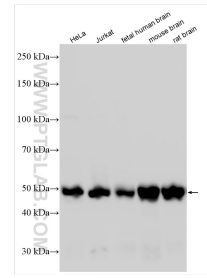
Selected Validation Data



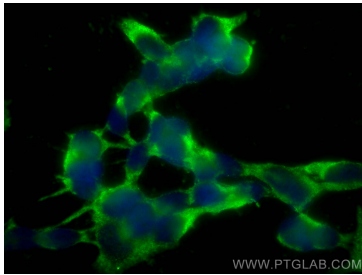
Immunohistochemical analysis of paraffin-embedded mouse brain tissue slide using 13123-1-AP (PPP2R2B/A/C/D antibody) at dilution of 1:200 (under 10x lens). Heat mediated antigen retrieval with Tris-EDTA buffer (pH 9.0).



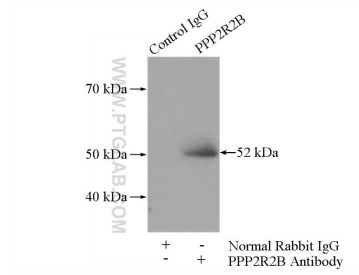
Various lysates were subjected to SDS PAGE followed by western blot with 13123-1-AP (PPP2R2B/A/C/D antibody) at dilution of 1:800 incubated at room temperature for 1.5 hours.



Various lysates were subjected to SDS PAGE followed by western blot with 13123-1-AP (PPP2R2B/A/C/D antibody) at dilution of 1:1500 incubated at room temperature for 1.5 hours.



Immunofluorescent analysis of (-20°C Ethanol) fixed SH-SY5Y cells using PPP2R2B/A/C/D antibody (13123-1-AP) at dilution of 1:400 and CoraLite®488-Conjugated AffiniPure Goat Anti-Rabbit IgG(H+L).



IP Result of anti-PPP2R2B/A/C/D (IP:13123-1-AP, 4ug; Detection:13123-1-AP 1:500) with SH-SY5Y cells lysate 1200ug.