

CCNL1 Polyclonal antibody

Catalog Number: 13138-1-AP

Basic Information

Catalog Number: 13138-1-AP	GenBank Accession Number: BC007081	Purification Method: Antigen affinity purification
Size: 150ul , Concentration: 150 µg/ml by Nanodrop and 133 µg/ml by Bradford method using BSA as the standard;	GeneID (NCBI): 57018	Recommended Dilutions: WB 1:500-1:1000
Source: Rabbit	Full Name: cyclin L1	
Isotype: IgG	Calculated MW: 526 aa, 60 kDa	
Immunogen Catalog Number: AG3731	Observed MW: 46 kDa	

Applications

Tested Applications: WB, ELISA	Positive Controls: WB : COLO 320 cells, PC-3 cells, MCF-7 cells
Species Specificity: human, mouse, rat	

Background Information

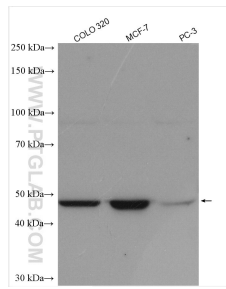
CCNL1, also named as Cyclin-L1, contains a RS region and belongs to the cyclin family. CCNL1 localizes in the nucleus speckle and is Overexpressed in primary tumors of head and neck squamous cell carcinomas (HNSCC). CCNL1 as transcriptional regulator participates in regulating the pre-mRNA splicing process. It seems to be involved in the regulation of RNA polymerase II (pol II). CCNL1 functions in association with cyclin-dependent kinases (CDKs) and has a role in the second step of splicing. It may be a candidate proto-oncogene in head and neck squamous cell carcinomas (HNSCC). The calculated molecular weight of CCNL1 is about 55-60 kDa, but we detected a 40-50 kDa isoform by western blotting.

Storage

Storage:
Store at -20°C. Stable for one year after shipment.
Storage Buffer:
PBS with 0.02% sodium azide and 50% glycerol pH 7.3.
Aliquoting is unnecessary for -20°C storage

*** 20ul sizes contain 0.1% BSA

Selected Validation Data



Various lysates were subjected to SDS PAGE followed by western blot with 13138-1-AP (CCNL1 antibody) at dilution of 1:800 incubated at room temperature for 1.5 hours.