

For Research Use Only

FGD1 Polyclonal antibody

Catalog Number: 13141-1-AP



Basic Information

Catalog Number: 13141-1-AP	GenBank Accession Number: BC034530	Purification Method: Antigen affinity purification
Size: 150ul , Concentration: 260 ug/ml by Nanodrop and 133 ug/ml by Bradford method using BSA as the standard;	GeneID (NCBI): 2245	Recommended Dilutions: WB 1:500-1:1000
Source: Rabbit	UNIPROT ID: P98174	IP 0.5-4.0 ug for 1.0-3.0 mg of total protein lysate
Isotype: IgG	Full Name: FYVE, RhoGEF and PH domain containing 1	IHC 1:50-1:500
Immunogen Catalog Number: AG3861	Calculated MW: 901 aa, 91 kDa	IF/ICC 1:50-1:500
	Observed MW: 130 kDa	

Applications

Tested Applications: WB, IHC, IF/ICC, IP, ELISA	Positive Controls:
Species Specificity: human, mouse, rat	WB : BxPC-3 cells, SK-N-SH cells, U2OS cells
Note-IHC: suggested antigen retrieval with TE buffer pH 9.0; (*) Alternatively, antigen retrieval may be performed with citrate buffer pH 6.0	IP : SK-N-SH cells,
	IHC : mouse kidney tissue,
	IF/ICC : U2OS cells,

Background Information

FGD1 is also named as FGDY (Faciogenital dysplasia 1 protein), ZFYVE3 (Zinc finger FYVE domain-containing protein 3), Rho/Rac guanine nucleotide exchange factor FGD1 (Rho/Rac GEF), FYVE, RhoGEF and PH domain-containing protein 1. FGD1 activates CDC42, a member of the Ras-like family of Rho- and Rac proteins, by exchanging bound GDP for free GTP. And FGD1 plays a role in regulating the actin cytoskeleton and cell shape. (PMID: 8969170). FGD1 was markedly overexpressed and might be a prognostic biomarker in osteosarcoma patient specimens (PMID: 32194840). FGD1 is specific for the Rho GTPase cell division cycle 42 (CDC42) (PMID: 22854039).

Storage

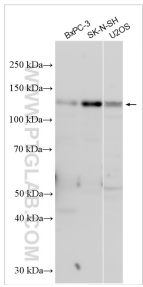
Storage:
Store at -20°C. Stable for one year after shipment.
Storage Buffer:
PBS with 0.02% sodium azide and 50% glycerol pH 7.3.
Aliquoting is unnecessary for -20°C storage

*** 20ul sizes contain 0.1% BSA

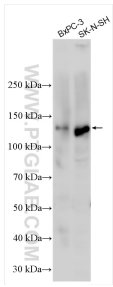
For technical support and original validation data for this product please contact:
T: 1 (888) 4PTGLAB (1-888-478-4522) (toll free in USA), or 1(312) 455-8498 (outside USA)
E: proteintech@ptglab.com
W: ptglab.com

This product is exclusively available under Proteintech Group brand and is not available to purchase from any other manufacturer.

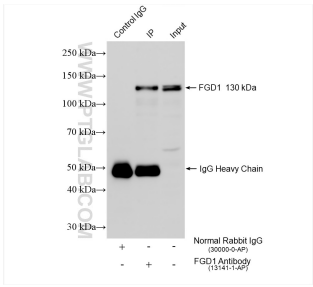
Selected Validation Data



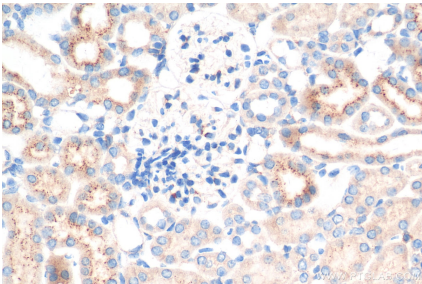
Various lysates were subjected to SDS PAGE followed by western blot with 13141-1-AP (FGD1 antibody) at dilution of 1:500 incubated at room temperature for 1.5 hours.



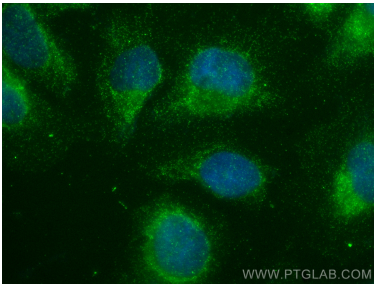
Various lysates were subjected to SDS PAGE followed by western blot with 13141-1-AP (FGD1 antibody) at dilution of 1:300 incubated at room temperature for 1.5 hours.



IP result of anti-FGD1 (IP:13141-1-AP, 4ug; Detection:13141-1-AP 1:600) with SK-N-SH cells lysate 1160 ug.



Immunohistochemical analysis of paraffin-embedded mouse kidney tissue slide using 13141-1-AP (FGD1 antibody) at dilution of 1:200 (under 40x lens). Heat mediated antigen retrieval with Tris-EDTA buffer (pH 9.0).



Immunofluorescent analysis of (-20°C Ethanol) fixed U2OS cells using FGD1 antibody (13141-1-AP) at dilution of 1:200 and Multi-rAb Coralite® Plus 488-Goat Anti-Rabbit Recombinant Secondary Antibody (H+L) (RGAR002).