

For Research Use Only

POP5 Polyclonal antibody

Catalog Number: 13146-1-AP



Basic Information

Catalog Number:

13146-1-AP

Size:

150ul , Concentration: 200 ug/ml by Nanodrop and 220 ug/ml by Bradford method using BSA as the standard;

Source:

Rabbit

Isotype:

IgG

Immunogen Catalog Number:

AG3710

GenBank Accession Number:

BC012505

GeneID (NCBI):

51367

UNIPROT ID:

Q969H6

Full Name:

processing of precursor 5, ribonuclease P/MRP subunit (S. cerevisiae)

Calculated MW:

163 aa, 19 kDa

Observed MW:

19 kDa

Purification Method:

Antigen affinity purification

Recommended Dilutions:

WB 1:500-1:1000

Applications

Tested Applications:

WB, ELISA

Species Specificity:

human

Positive Controls:

WB : A549 cells, HeLa cells, LNCaP cells

Background Information

POP5 is a component of ribonuclease P and MRP ribonuclease complex that cleaves pre-rRNA sequences and generates mature tRNA molecules. Endogenous hPop5 protein is localized in the nucleus and accumulates in the nucleolus, which is consistent with its association with RNase MRP and RNase P. The human Pop5 cDNA encodes a protein of 163 amino acids with a predicted molecular mass of 18.8 kDa (PMID: 11413139).

Storage

Storage:

Store at -20°C. Stable for one year after shipment.

Storage Buffer:

PBS with 0.02% sodium azide and 50% glycerol pH 7.3.

Aliquoting is unnecessary for -20°C storage

*** 20ul sizes contain 0.1% BSA

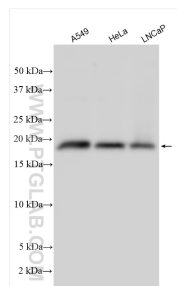
For technical support and original validation data for this product please contact:

T: 1 (888) 4PTGLAB (1-888-478-4522) (toll free in USA), or 1(312) 455-8498 (outside USA)

E: proteintech@ptglab.com
W: ptglab.com

This product is exclusively available under Proteintech Group brand and is not available to purchase from any other manufacturer.

Selected Validation Data



Various lysates were subjected to SDS PAGE followed by western blot with 13146-1-AP (POP5 antibody) at dilution of 1:600 incubated at room temperature for 1.5 hours.