

For Research Use Only

DHX36 Polyclonal antibody, PBS Only

Catalog Number: 13159-1-PBS

Featured Product



Basic Information

Catalog Number:

13159-1-PBS

Size:

100ug, Concentration: 1 mg/ml by Nanodrop;

Source:

Rabbit

Isotype:

IgG

Immunogen Catalog Number:

AG3799

GenBank Accession Number:

BC036035

GeneID (NCBI):

170506

UNIPROT ID:

Q9H2U1

Full Name:

DEAH (Asp-Glu-Ala-His) box polypeptide 36

Calculated MW:

1008 aa, 115 kDa

Observed MW:

110-120 kDa

Purification Method:

Antigen affinity purification

Applications

Tested Applications:

WB, IHC, IP, Indirect ELISA

Species Specificity:

human, mouse

Background Information

DHX36, also known as RNA associated with AU-rich element (RHAU) and G4R1, is an adenosine triphosphate (ATP)-dependent RNA helicase that belongs to the DExH/D family of RNA modifying enzymes. Proteins in this family involve in a wide range of cellular functions including RNA splicing, ribosome assembly, messenger RNA (mRNA) stability, microRNA processing, ribonucleoprotein remodeling and RNA trafficking. DHX36 is an RNA helicase that has specificity for DNA and RNA G4-quadruplexes, and resolves G4 structures into separate nucleotide strands for metabolic processing of G-rich sequence.

Storage

Storage:

Store at -80°C.

Storage Buffer:

PBS only, pH7.3

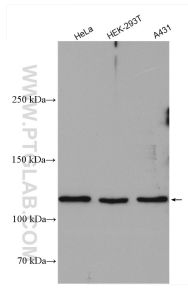
For technical support and original validation data for this product please contact:

T: 1 (888) 4PTGLAB (1-888-478-4522) (toll free in USA), or 1(312) 455-8498 (outside USA)

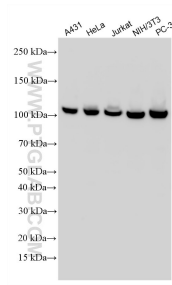
E: proteintech@ptglab.com
W: ptglab.com

This product is exclusively available under Proteintech Group brand and is not available to purchase from any other manufacturer.

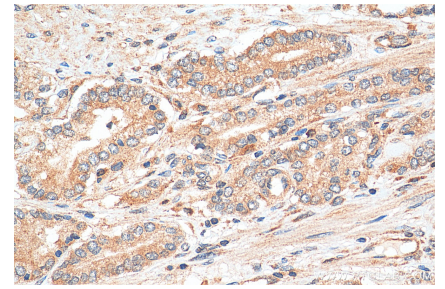
Selected Validation Data



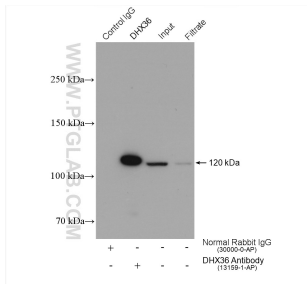
Various lysates were subjected to SDS PAGE followed by western blot with 13159-1-AP (DHX36 antibody) at dilution of 1:1000 incubated at room temperature for 1.5 hours. This data was developed using the same antibody clone with 13159-1-PBS in a different storage buffer formulation.



Various lysates were subjected to SDS PAGE followed by western blot with 13159-1-AP (DHX36 antibody) at dilution of 1:3000 incubated at room temperature for 1.5 hours. This data was developed using the same antibody clone with 13159-1-PBS in a different storage buffer formulation.



Immunohistochemical analysis of paraffin-embedded human prostate cancer tissue slide using 13159-1-AP (DHX36 antibody) at dilution of 1:200 (under 40x lens). Heat mediated antigen retrieval with Tris-EDTA buffer (pH 9.0). This data was developed using the same antibody clone with 13159-1-PBS in a different storage buffer formulation.



IP result of anti-DHX36 (IP:13159-1-AP, 4ug; Detection:13159-1-AP 1:500) with PC-3 cells lysate 1760 ug. This data was developed using the same antibody clone with 13159-1-PBS in a different storage buffer formulation.