

For Research Use Only

# PSMA/GCPII Polyclonal antibody

Catalog Number: 13163-1-AP

10 Publications



## Basic Information

<b>Catalog Number:</b> 13163-1-AP	<b>GenBank Accession Number:</b> BC025672	<b>Purification Method:</b> Antigen affinity purification
<b>Size:</b> 150ul , Concentration: 400 ug/ml by Nanodrop and 233 ug/ml by Bradford method using BSA as the standard;	<b>GeneID (NCBI):</b> 2346	<b>Recommended Dilutions:</b> WB 1:1000-1:4000
<b>Source:</b> Rabbit	<b>UNIPROT ID:</b> Q04609	<b>IHC 1:500-1:2000</b>
<b>Isotype:</b> IgG	<b>Full Name:</b> folate hydrolase (prostate-specific membrane antigen) 1	<b>IF/ICC 1:50-1:500</b>
<b>Immunogen Catalog Number:</b> AG3812	<b>Calculated MW:</b> 719 aa, 81 kDa	
	<b>Observed MW:</b> 100 kDa, 120 kDa	

## Applications

<b>Tested Applications:</b> WB, IHC, IF/ICC, ELISA	<b>Positive Controls:</b>
<b>Cited Applications:</b> WB, IHC, IF	<b>WB :</b> LNCaP cells, human liver tissue, mouse kidney tissue, rat kidney tissue
<b>Species Specificity:</b> human, mouse, rat	<b>IHC :</b> human prostate cancer tissue, human gliomas tissue, human colon cancer tissue
<b>Cited Species:</b> human, mouse, rat, monkey	<b>IF/ICC :</b> LNCaP cells,
<b>Note-IHC: suggested antigen retrieval with TE buffer pH 9.0; (*) Alternatively, antigen retrieval may be performed with citrate buffer pH 6.0</b>	

## Background Information

PSMA(Prostate-specific membrane antigen) is also named as FOLH1, FOLH, NAALAD1, PSM and belongs to the peptidase M28 family. PSMA is a 100-120 kDa integral transmembrane glycoprotein, considered to be a highly specific marker of the prostate gland, and has successfully been used as a marker of circulating prostatic epithelial cells(PMID:10074909; 15680901). It is involved in conversion of the major neurotransmitter (NAAG) to NAA and free glutamate. It has 8 isoforms produced by alternative splicing.

## Notable Publications

Author	Pubmed ID	Journal	Application
Jiang Ni	33069744	J Control Release	WB
Xiaoyi Gao	34632781	ACS Sens	WB,FC
Joshua Aaron Korsen	35058323	J Nucl Med	IHC

## Storage

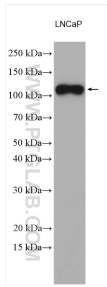
**Storage:**  
Store at -20°C. Stable for one year after shipment.  
**Storage Buffer:**  
PBS with 0.02% sodium azide and 50% glycerol pH 7.3.  
**Aliquoting is unnecessary for -20°C storage**

\*\*\* 20ul sizes contain 0.1% BSA

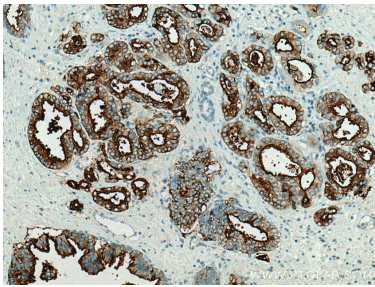
For technical support and original validation data for this product please contact:  
T: 1 (888) 4PTGLAB (1-888-478-4522) (toll free in USA), or 1(312) 455-8498 (outside USA)  
E: proteintech@ptglab.com  
W: ptglab.com

This product is exclusively available under Proteintech Group brand and is not available to purchase from any other manufacturer.

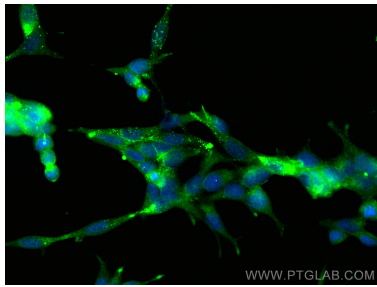
Selected Validation Data



LNCaP cells were subjected to SDS PAGE followed by western blot with 13163-1-AP (PSMA/GCPII antibody) at dilution of 1:2000 incubated at room temperature for 1.5 hours.



Immunohistochemical analysis of paraffin-embedded human prostate cancer tissue slide using 13163-1-AP (PSMA/GCPII antibody) at dilution of 1:1000 (under 10x lens). Heat mediated antigen retrieval with Tris-EDTA buffer (pH 9.0).



Immunofluorescent analysis of (-20°C Ethanol) fixed LNCaP cells using PSMA/GCPII antibody (13163-1-AP) at dilution of 1:200 and CoraLite®488-Conjugated Goat Anti-Rabbit IgG(H+L).