

For Research Use Only

# DCBLD2 Polyclonal antibody

Catalog Number: 13168-1-AP

Featured Product

3 Publications



## Basic Information

### Catalog Number:

13168-1-AP

### Size:

150ul, Concentration: 300 ug/ml by Nanodrop and 180 ug/ml by Bradford method using BSA as the standard;

### Source:

Rabbit

### Isotype:

IgG

### Immunogen Catalog Number:

AG3821

### GenBank Accession Number:

BC029658

### GeneID (NCBI):

131566

### UNIPROT ID:

Q96PD2

### Full Name:

discoidin, CUB and LCCL domain containing 2

### Calculated MW:

775 aa, 89 kDa

### Observed MW:

93 kDa, 127 kDa

### Purification Method:

Antigen affinity purification

### Recommended Dilutions:

WB 1:500-1:3000

IP 0.5-4.0 ug for 1.0-3.0 mg of total protein lysate

IHC 1:50-1:500

## Applications

### Tested Applications:

WB, IHC, IP, ELISA

### Cited Applications:

WB, IHC

### Species Specificity:

human

### Cited Species:

human, mouse

**Note-IHC: suggested antigen retrieval with TE buffer pH 9.0; (\*) Alternatively, antigen retrieval may be performed with citrate buffer pH 6.0**

### Positive Controls:

WB: MKN-45 cells, human liver tissue, human brain tissue, SW 1990 cells, U2OS cells

IP: U2OS cells,

IHC: human intrahepatic cholangiocarcinoma tissue,

## Background Information

DCBLD2, also known as ESDN or CLCP1, was first identified from human coronary arterial cells by a signal sequence trap method. DCBLD2 regulates proliferation, migration, and invasion in various tumors, including glioma, hypopharyngeal squamous cell carcinoma, and myxofibrosarcoma. The human DCBLD2 protein has a predicted molecular mass of 80 kDa based on its amino acid sequence, although it regularly displays an effective molecular mass of 130 kDa via SDS-PAGE (PMID: 30902898).

## Notable Publications

Author	Pubmed ID	Journal	Application
Jing Zhang	38088494	Environ Toxicol	WB
Yuqi Xin	37925175	Aging (Albany NY)	WB
Qiankun Zhu	36777511	Am J Cancer Res	WB, IHC

## Storage

### Storage:

Store at -20°C. Stable for one year after shipment.

### Storage Buffer:

PBS with 0.02% sodium azide and 50% glycerol pH 7.3.

Aliquoting is unnecessary for -20°C storage

\*\*\* 20ul sizes contain 0.1% BSA

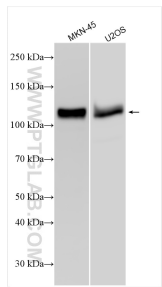
For technical support and original validation data for this product please contact:

T: 1 (888) 4PTGLAB (1-888-478-4522) (toll free in USA), or 1(312) 455-8498 (outside USA)

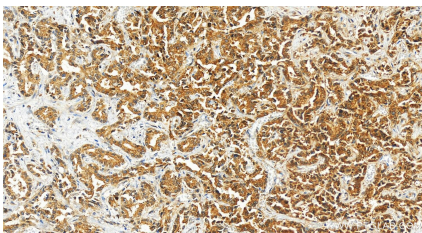
E: proteintech@ptglab.com  
W: ptglab.com

This product is exclusively available under Proteintech Group brand and is not available to purchase from any other manufacturer.

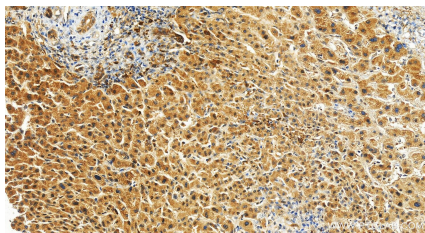
Selected Validation Data



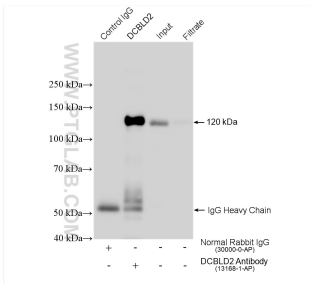
Various lysates were subjected to SDS PAGE followed by western blot with 13168-1-AP (DCBLD2 antibody) at dilution of 1:1500 incubated at room temperature for 1.5 hours.



Immunohistochemical analysis of paraffin-embedded human intrahepatic cholangiocarcinoma tissue slide using 13168-1-AP (DCBLD2 antibody) at dilution of 1:200 (under 20x lens). Heat mediated antigen retrieval with Tris-EDTA buffer (pH 9.0).



Immunohistochemical analysis of paraffin-embedded human intrahepatic cholangiocarcinoma tissue slide using 13168-1-AP (DCBLD2 antibody) at dilution of 1:200 (under 20x lens). Heat mediated antigen retrieval with Tris-EDTA buffer (pH 9.0).



IP result of anti-DCBLD2 (IP:13168-1-AP, 4ug; Detection:13168-1-AP 1:1000) with U2OS cells lysate 440 ug.