

For Research Use Only

# RBBP5 Polyclonal antibody

Catalog Number: 13181-1-AP **1 Publications**



## Basic Information

<b>Catalog Number:</b> 13181-1-AP	<b>GenBank Accession Number:</b> BC037284	<b>Purification Method:</b> Antigen affinity purification
<b>Size:</b> 150ul , Concentration: 300 µg/ml by Nanodrop and 200 µg/ml by Bradford method using BSA as the standard;	<b>GeneID (NCBI):</b> 5929	<b>Recommended Dilutions:</b> WB 1:500-1:1000
<b>Source:</b> Rabbit	<b>Full Name:</b> retinoblastoma binding protein 5	
<b>Isotype:</b> IgG	<b>Calculated MW:</b> 538 aa, 59 kDa	
<b>Immunogen Catalog Number:</b> AG3848	<b>Observed MW:</b> 59 kDa	

## Applications

<b>Tested Applications:</b> WB,ELISA	<b>Positive Controls:</b> WB : HL-60 cells, HeLa cells
<b>Cited Applications:</b> WB	
<b>Species Specificity:</b> human	
<b>Cited Species:</b> human	

## Background Information

RBQ-3, also known as RBBP5 (retinoblastoma binding protein 5) or SWD1, is a 538 amino acid protein that localizes to the nucleus and contains six WD repeats. Expressed ubiquitously, RBQ-3 functions as a component of the Set1 complex and preferentially binds to underphosphorylated forms of the retinoblastoma (Rb) protein, possibly playing a role in the regulation of cell proliferation. RBQ-3 exists as two alternatively spliced isoforms and, upon DNA damage, is subject to phosphorylation by ATM or ATR.

## Notable Publications

Author	Pubmed ID	Journal	Application
Gongwei Wu	28474697	Nat Commun	WB

## Storage

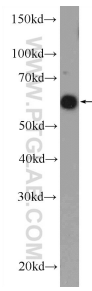
**Storage:**  
Store at -20°C. Stable for one year after shipment.  
**Storage Buffer:**  
PBS with 0.02% sodium azide and 50% glycerol pH 7.3.  
Aliquoting is unnecessary for -20°C storage

\*\*\* 20ul sizes contain 0.1% BSA

For technical support and original validation data for this product please contact:  
T: 1 (888) 4PTGLAB (1-888-478-4522) (toll free in USA), or 1(312) 455-8498 (outside USA)  
E: proteintech@ptglab.com  
W: ptglab.com

This product is exclusively available under Proteintech Group brand and is not available to purchase from any other manufacturer.

## Selected Validation Data



HL-60 cells were subjected to SDS PAGE followed by western blot with 13181-1-AP (RBBP5 Antibody) at dilution of 1:600 incubated at 4 degree celsius over night.