

For Research Use Only

MLF1IP Polyclonal antibody

Catalog Number: 13186-1-AP

Featured Product

1 Publications



Basic Information

Catalog Number:

13186-1-AP

Size:

150ul, Concentration: 133 ug/ml by Nanodrop and 133 ug/ml by Bradford method using BSA as the standard;

Source:

Rabbit

Isotype:

IgG

Immunogen Catalog Number:

AG3858

GenBank Accession Number:

BC031520

GeneID (NCBI):

79682

UNIPROT ID:

Q71F23

Full Name:

MLF1 interacting protein

Calculated MW:

418 aa, 48 kDa

Observed MW:

46-50 kDa, 60 kDa

Purification Method:

Antigen affinity purification

Recommended Dilutions:

WB 1:1000-1:8000

IHC 1:20-1:200

IF/ICC 1:10-1:100

Applications

Tested Applications:

WB, IHC, IF/ICC, ELISA

Cited Applications:

WB, IHC

Species Specificity:

human, mouse, rat

Cited Species:

human

Note-IHC: suggested antigen retrieval with TE buffer pH 9.0; (*) Alternatively, antigen retrieval may be performed with citrate buffer pH 6.0

Positive Controls:

WB : HepG2 cells, mouse liver tissue, mouse testis tissue, rat liver tissue

IHC : human testis tissue, human colon tissue, human gliomas tissue

IF/ICC : HepG2 cells,

Background Information

MLF1IP, also named as CENPU, ICEN24, KLIP1 and PBIP1, belongs to the CENP-U/AME1 family. MLF1IP plays an important role in assembly of kinetochore proteins, mitotic progression and chromosome segregation. Moreover, MLF1IP has been shown to be involved in tumorigenesis in several types of cancer including glioblastoma, prostate cancer and luminal breast cancer (PMID: 27378428). MLF1IP has 3 isoforms with the molecular mass of 21, 38 and 47 kDa.

Notable Publications

Author	Pubmed ID	Journal	Application
Yuting Xu	35122991	Cell Signal	WB,IHC

Storage

Storage:

Store at -20°C. Stable for one year after shipment.

Storage Buffer:

PBS with 0.02% sodium azide and 50% glycerol pH 7.3.

Aliquoting is unnecessary for -20°C storage

*** 20ul sizes contain 0.1% BSA

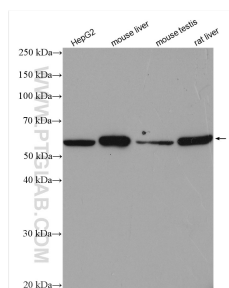
For technical support and original validation data for this product please contact:

T: 1 (888) 4PTGLAB (1-888-478-4522) (toll free in USA), or 1(312) 455-8498 (outside USA)

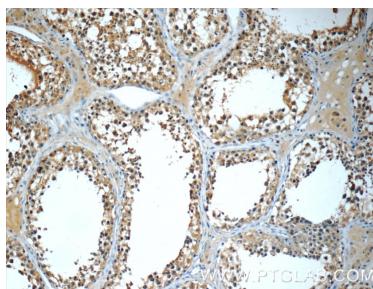
E: proteintech@ptglab.com
W: ptglab.com

This product is exclusively available under Proteintech Group brand and is not available to purchase from any other manufacturer.

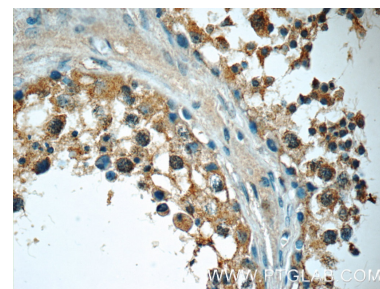
Selected Validation Data



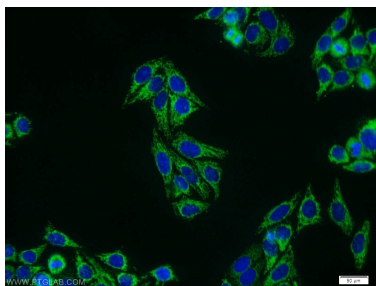
Various lysates were subjected to SDS PAGE followed by western blot with 13186-1-AP (MLF1IP antibody) at dilution of 1:3000 incubated at room temperature for 1.5 hours.



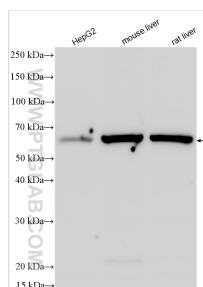
Immunohistochemical analysis of paraffin-embedded human testis tissue slide using 13186-1-AP (MLF1IP Antibody) at dilution of 1:50 (under 10x lens).



Immunohistochemical analysis of paraffin-embedded human testis tissue slide using 13186-1-AP (MLF1IP Antibody) at dilution of 1:50 (under 40x lens).



Immunofluorescent analysis of HepG2 cells using 13186-1-AP (MLF1IP antibody) at dilution of 1:25 and Alexa Fluor 488-conjugated Goat Anti-Rabbit IgG(H+L).



Various lysates were subjected to SDS PAGE followed by western blot with 13186-1-AP (MLF1IP antibody) at dilution of 1:4000 incubated at room temperature for 1.5 hours.