

For Research Use Only

MLF1IP Polyclonal antibody, PBS Only

Catalog Number: 13186-1-PBS

Featured Product



Basic Information

Catalog Number:

13186-1-PBS

Size:

100ug, Concentration: 1 mg/ml by Nanodrop;

Source:

Rabbit

Isotype:

IgG

Immunogen Catalog Number:

AG3858

GenBank Accession Number:

BC031520

GeneID (NCBI):

79682

UNIPROT ID:

Q71F23

Full Name:

MLF1 interacting protein

Calculated MW:

418 aa, 48 kDa

Observed MW:

46-50 kDa, 60 kDa

Purification Method:

Antigen affinity purification

Applications

Tested Applications:

WB, IHC, IF/ICC, Indirect ELISA

Species Specificity:

human, mouse, rat

Background Information

MLF1IP, also named as CENPU, ICEN24, KLIP1 and PBIP1, belongs to the CENP-U/AME1 family. MLF1IP plays an important role in assembly of kinetochore proteins, mitotic progression and chromosome segregation. Moreover, MLF1IP has been shown to be involved in tumorigenesis in several types of cancer including glioblastoma, prostate cancer and luminal breast cancer (PMID: 27378428). MLF1IP has 3 isoforms with the molecular mass of 21, 38 and 47 kDa.

Storage

Storage:

Store at -80°C.

Storage Buffer:

PBS only, pH7.3

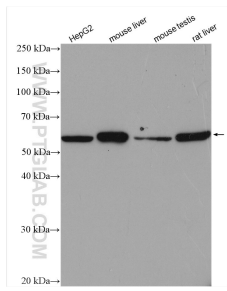
For technical support and original validation data for this product please contact:

T: 1 (888) 4PTGLAB (1-888-478-4522) (toll free in USA), or 1(312) 455-8498 (outside USA)

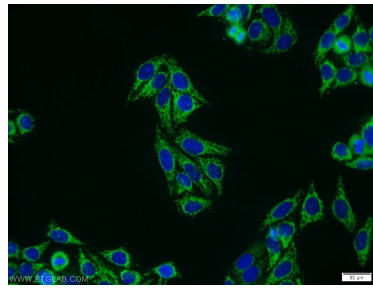
E: proteintech@ptglab.com
W: ptglab.com

This product is exclusively available under Proteintech Group brand and is not available to purchase from any other manufacturer.

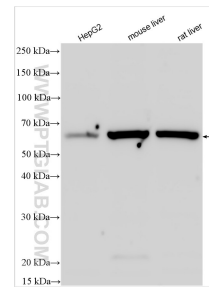
Selected Validation Data



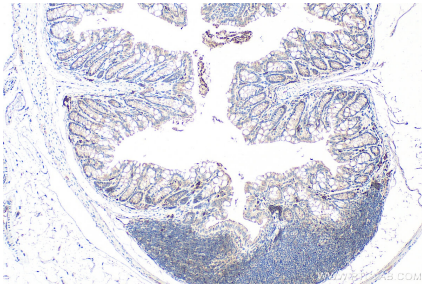
Various lysates were subjected to SDS PAGE followed by western blot with 13186-1-AP (MLF1P antibody) at dilution of 1:3000 incubated at room temperature for 1.5 hours. This data was developed using the same antibody clone with 13186-1-PBS in a different storage buffer formulation.



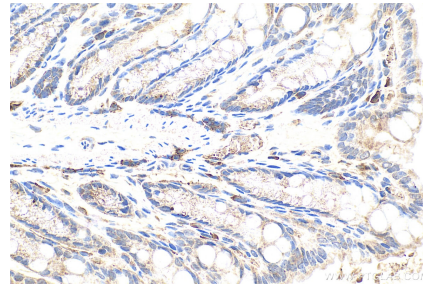
Immunofluorescent analysis of HepG2 cells using 13186-1-AP (MLF1P antibody) at dilution of 1:25 and Alexa Fluor 488-conjugated AffiniPure Goat Anti-Rabbit IgG(H+L). This data was developed using the same antibody clone with 13186-1-PBS in a different storage buffer formulation.



Various lysates were subjected to SDS PAGE followed by western blot with 13186-1-AP (MLF1P antibody) at dilution of 1:4000 incubated at room temperature for 1.5 hours. This data was developed using the same antibody clone with 13186-1-PBS in a different storage buffer formulation.



Immunohistochemical analysis of paraffin-embedded mouse colon tissue slide using 13186-1-AP (MLF1P antibody) at dilution of 1:200 (under 10x lens). Heat mediated antigen retrieval with Tris-EDTA buffer (pH 9.0). This data was developed using the same antibody clone with 13186-1-PBS in a different storage buffer formulation.



Immunohistochemical analysis of paraffin-embedded mouse colon tissue slide using 13186-1-AP (MLF1P antibody) at dilution of 1:200 (under 40x lens). Heat mediated antigen retrieval with Tris-EDTA buffer (pH 9.0). This data was developed using the same antibody clone with 13186-1-PBS in a different storage buffer formulation.