

For Research Use Only

CLEC2D Polyclonal antibody

Catalog Number: 13188-1-AP



Basic Information

Catalog Number: 13188-1-AP	GenBank Accession Number: BC019883	Purification Method: Antigen affinity purification
Size: 150ul , Concentration: 1000 µg/ml by Nanodrop;	GeneID (NCBI): 29121	Recommended Dilutions: WB 1:500-1:1000
Source: Rabbit	Full Name: C-type lectin domain family 2, member D	
Isotype: IgG	Calculated MW: 154 aa, 18 kDa	
Immunogen Catalog Number: AG3862	Observed MW: 33 kDa	

Applications

Tested Applications: WB, ELISA	Positive Controls:
Species Specificity: human	WB : Daudi cells, Jurkat cells, Saos-2 cells, U-87 MG cells

Background Information

CLEC2D (C-type lectin domain family 2 member D), also known as LLT1 (lectin-like transcript 1) or OCIL (Osteoclast inhibitory lectin), is a single-pass type II membrane protein expressed by hematopoietic cells and osteoblasts (PMID: 21930700; 14753741). Its expression was found to be tightly correlated with activation on T cells, NK cells, B cells, and DCs (PMID: 21930700). CLEC2D is a ligand for the human NKR-P1A (CD161) receptor and their interaction differentially regulates NK- and T-cell functions (PMID: 16339513, 16339512). It inhibits the formation and function of osteoclasts and modulates the release of interferon-gamma by human NK cells (PMID:14753741; 20415786).

Storage

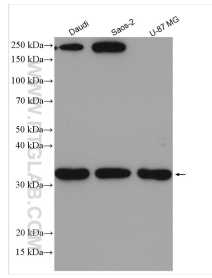
Storage:
Store at -20°C. Stable for one year after shipment.
Storage Buffer:
PBS with 0.02% sodium azide and 50% glycerol pH 7.3.
Aliquoting is unnecessary for -20°C storage

*** 20ul sizes contain 0.1% BSA

For technical support and original validation data for this product please contact:
T: 1 (888) 4PTGLAB (1-888-478-4522) (toll free in USA), or 1(312) 455-8498 (outside USA) E: proteintech@ptglab.com W: ptglab.com

This product is exclusively available under Proteintech Group brand and is not available to purchase from any other manufacturer.

Selected Validation Data



Various lysates were subjected to SDS PAGE followed by western blot with 13188-1-AP (CLEC2D antibody) at dilution of 1:500 incubated at room temperature for 1.5 hours.