

For Research Use Only

# PPM1B Polyclonal antibody

Catalog Number: 13193-1-AP **5 Publications**



## Basic Information

<b>Catalog Number:</b> 13193-1-AP	<b>GenBank Accession Number:</b> BC012002	<b>Purification Method:</b> Antigen affinity purification
<b>Size:</b> 150ul , Concentration: 700 µg/ml by Nanodrop;	<b>GeneID (NCBI):</b> 5495	<b>Recommended Dilutions:</b> WB 1:1000-1:4000 IHC 1:20-1:200 IF 1:50-1:500
<b>Source:</b> Rabbit	<b>Full Name:</b> protein phosphatase 1B (formerly 2C), magnesium-dependent, beta isoform	
<b>Isotype:</b> IgG	<b>Calculated MW:</b> 479 aa, 53 kDa	
<b>Immunogen Catalog Number:</b> AG3871	<b>Observed MW:</b> 36, 53 kDa	

## Applications

<b>Tested Applications:</b> IF, IHC, WB, ELISA	<b>Positive Controls:</b> WB : HeLa cells, MCF-7 cells
<b>Cited Applications:</b> Cell treatment, IF, IP	<b>IHC :</b> human breast cancer tissue, human skeletal muscle tissue
<b>Species Specificity:</b> human, mouse	<b>IF :</b> MCF-7 cells,
<b>Cited Species:</b> human, mouse	

**Note-IHC: suggested antigen retrieval with TE buffer pH 9.0; (\*) Alternatively, antigen retrieval may be performed with citrate buffer pH 6.0**

## Background Information

PPM1B is a member of the metal-dependent serine/threonine protein phosphatase (PPM) family with important regulatory functions in cellular signalling pathways (PMID: 18066953). PPM1B is also an important negative regulator of several stress signalling pathways and has been shown to negatively regulate the stress-activated p38 and JNK pathways by directly dephosphorylating upstream signalling proteins (PMID: 9824284). Moreover, PPM1B has also been shown to prevent cell death by negatively regulating necrotic cell death in a RIP3 dephosphorylation-dependent manner. (PMID: 25751141) PPM1B can be detected as the WM of 36-55 kDa.

## Notable Publications

Author	Pubmed ID	Journal	Application
Xin Li	28361952	Nat Commun	IP
Paula Bollmann	33597873	Front Pharmacol	
Katyayane Neopane	36543129	Cell Rep	IP,IF,Cell treatment

## Storage

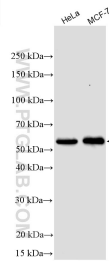
**Storage:**  
Store at -20°C. Stable for one year after shipment.  
**Storage Buffer:**  
PBS with 0.02% sodium azide and 50% glycerol pH 7.3.  
Aliquoting is unnecessary for -20°C storage

\*\*\* 20ul sizes contain 0.1% BSA

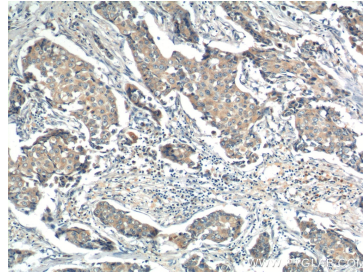
For technical support and original validation data for this product please contact:  
T: 1 (888) 4PTGLAB (1-888-478-4522) (toll free in USA), or 1(312) 455-8498 (outside USA)  
E: proteintech@ptglab.com  
W: ptglab.com

This product is exclusively available under Proteintech Group brand and is not available to purchase from any other manufacturer.

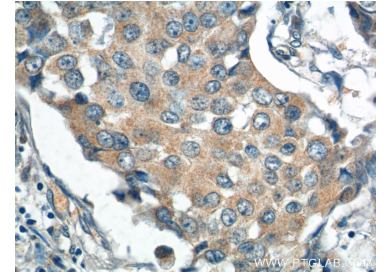
## Selected Validation Data



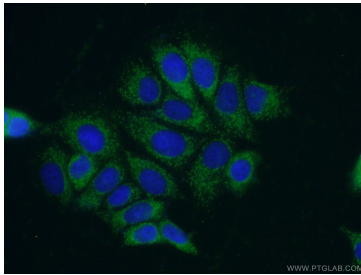
Various lysates were subjected to SDS PAGE followed by western blot with 13193-1-AP (PPM1B antibody) at dilution of 1:2000 incubated at room temperature for 1.5 hours.



Immunohistochemical analysis of paraffin-embedded human breast cancer tissue slide using 13193-1-AP (PPM1B Antibody) at dilution of 1:200 (under 10x lens).



Immunohistochemical analysis of paraffin-embedded human breast cancer tissue slide using 13193-1-AP (PPM1B Antibody) at dilution of 1:200 (under 40x lens).



Immunofluorescent analysis of (-20°C Ethanol) fixed MCF-7 cells using 13193-1-AP (PPM1B antibody) at dilution of 1:50 and Alexa Fluor 488-conjugated AffiniPure Goat Anti-Rabbit IgG(H+L).