

For Research Use Only

DCLRE1B Polyclonal antibody

Catalog Number: 13203-1-AP

1 Publications



Basic Information

Catalog Number:

13203-1-AP

Size:

150ul , Concentration: 550 ug/ml by Nanodrop and 307 ug/ml by Bradford method using BSA as the standard;

Source:

Rabbit

Isotype:

IgG

Immunogen Catalog Number:

AG3945

GenBank Accession Number:

BC029687

GeneID (NCBI):

64858

UNIPROT ID:

Q9H816

Full Name:

DNA cross-link repair 1B (PSO2 homolog, *S. cerevisiae*)

Calculated MW:

532 aa, 60 kDa

Observed MW:

60 kDa

Purification Method:

Antigen affinity purification

Recommended Dilutions:

WB 1:500-1:1000

Applications

Tested Applications:

WB, ELISA

Cited Applications:

WB

Species Specificity:

human, mouse, rat

Cited Species:

human

Positive Controls:

WB : Jurkat cells, HepG2 cells

Background Information

Interstrand cross-links (ICLs) is an extremely cytotoxic form of DNA damage that covalently tethers the two strands of the double helix, which inhibits fundamental nuclear functions, including transcription and DNA replication [PMID:21701511]. DCLRE1B is one of several evolutionarily conserved genes involved in repair of interstrand cross-links [PMID:10848582]. Furthermore, DCLRE1B was identified as a TRF2-interacting protein and, has a role in telomere maintenance in association with the Shelterin complex, preventing non-homologous end-joining-mediated chromosome fusions protecting leading strand telomeres [PMID:20619712].

Notable Publications

Author	Pubmed ID	Journal	Application
Nazareno Bona	37580626	Nat Struct Mol Biol	WB

Storage

Storage:

Store at -20°C. Stable for one year after shipment.

Storage Buffer:

PBS with 0.02% sodium azide and 50% glycerol pH 7.3.

Aliquoting is unnecessary for -20°C storage

*** 20ul sizes contain 0.1% BSA

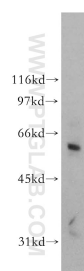
For technical support and original validation data for this product please contact:

T: 1 (888) 4PTGLAB (1-888-478-4522) (toll free in USA), or 1(312) 455-8498 (outside USA)

E: proteintech@ptglab.com
W: ptglab.com

This product is exclusively available under Proteintech Group brand and is not available to purchase from any other manufacturer.

Selected Validation Data



Jurkat cells were subjected to SDS PAGE followed by western blot with 13203-1-AP (DCLRE1B antibody) at dilution of 1:800 incubated at room temperature for 1.5 hours.