

For Research Use Only

# AK3L1 Polyclonal antibody

Catalog Number: 13206-1-AP

Featured Product

2 Publications



## Basic Information

### Catalog Number:

13206-1-AP

### Size:

150ul, Concentration: 900 ug/ml by Nanodrop and 513 ug/ml by Bradford method using BSA as the standard;

### Source:

Rabbit

### Isotype:

IgG

### Immunogen Catalog Number:

AG3966

### GenBank Accession Number:

BC040224

### GeneID (NCBI):

205

### UNIPROT ID:

P27144

### Full Name:

adenylate kinase 3-like 1

### Calculated MW:

223 aa, 25 kDa

### Observed MW:

30 kDa

### Purification Method:

Antigen affinity purification

### Recommended Dilutions:

WB: 1:500-1:3600

IP: 0.5-4.0 ug for 1.0-3.0 mg of total protein lysate

IHC: 1:50-1:500

IF/ICC: 1:50-1:500

## Applications

### Tested Applications:

WB, IHC, IF/ICC, IP, ELISA

### Cited Applications:

WB, IHC

### Species Specificity:

human

### Cited Species:

human, rat

### Positive Controls:

WB: MCF7 cells, human liver tissue

IP: MCF-7 cells,

IHC: human breast cancer tissue,

IF/ICC: MCF-7 cells,

**Note-IHC: suggested antigen retrieval with TE buffer pH 9.0; (\*) Alternatively, antigen retrieval may be performed with citrate buffer pH 6.0**

## Background Information

AK3L1(Adenylate kinase 3-like) is also named as AK4, AK3L1 and belongs to the adenylate kinase family. It catalyzes the reversible transfer of the terminal phosphate group between ATP and AMP. It is important for maintenance of homeostasis of the adenine and guanine nucleotide pools. Expression is highest in kidney and heart, moderate in liver, weak in brain, and barely detectable in placenta and lung by northern blot(PMID:11485571). This antibody may also recognize AK3 due to the high homology.

## Notable Publications

| Author       | Pubmed ID | Journal         | Application |
|--------------|-----------|-----------------|-------------|
| Chunbao Zang | 30479565  | Cancer Cell Int | WB          |
| Wei Jiang    | 37932484  | Exp Brain Res   | WB,IHC      |

## Storage

### Storage:

Store at -20°C. Stable for one year after shipment.

### Storage Buffer:

PBS with 0.02% sodium azide and 50% glycerol, pH7.3

Aliquoting is unnecessary for -20°C storage

\*\*\* 20ul sizes contain 0.1% BSA

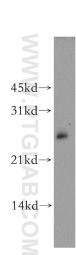
For technical support and original validation data for this product please contact:

T: 1 (888) 4PTGLAB (1-888-478-4522) (toll free in USA), or 1(312) 455-8498 (outside USA)

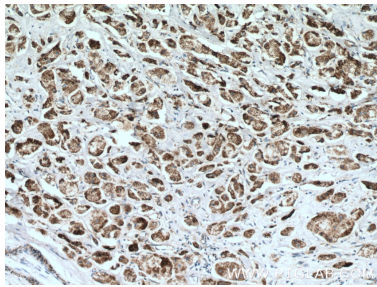
E: [proteintech@ptglab.com](mailto:proteintech@ptglab.com)  
W: [ptglab.com](http://ptglab.com)

This product is exclusively available under Proteintech Group brand and is not available to purchase from any other manufacturer.

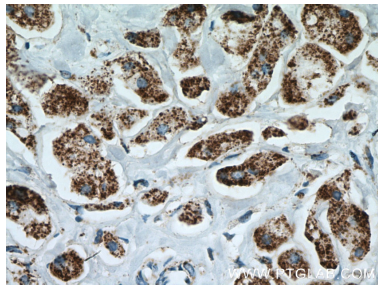
Selected Validation Data



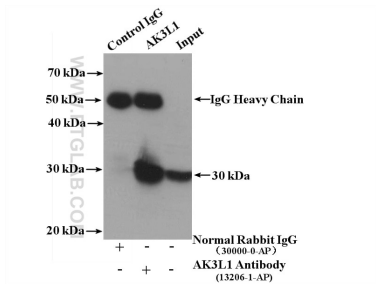
MCF-7 cells were subjected to SDS PAGE followed by western blot with 13206-1-AP (AK3L1 antibody) at dilution of 1:400 incubated at room temperature for 1.5 hours.



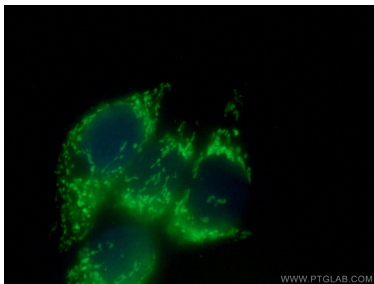
Immunohistochemical analysis of paraffin-embedded human breast cancer tissue slide using 13206-1-AP (AK3L1 antibody) at dilution of 1:200 (under 10x lens. Heat mediated antigen retrieval with Tris-EDTA buffer (pH 9.0).



Immunohistochemical analysis of paraffin-embedded human breast cancer tissue slide using 13206-1-AP (AK3L1 antibody) at dilution of 1:200 (under 40x lens. Heat mediated antigen retrieval with Tris-EDTA buffer (pH 9.0).



IP result of anti-AK3L1 (IP:13206-1-AP, 4ug; Detection:13206-1-AP 1:300) with MCF-7 cells lysate 3200 ug.



Immunofluorescent analysis of (4% PFA) fixed MCF-7 cells using 13206-1-AP (AK3L1 antibody) at dilution of 1:100 and CoraLite488-Conjugated AffiniPure Goat Anti-Rabbit IgG(H+L).