

For Research Use Only

CKMT2 Polyclonal antibody

Catalog Number: 13207-1-AP

7 Publications



Basic Information

Catalog Number: 13207-1-AP	GenBank Accession Number: BC029140	Purification Method: Antigen affinity purification
Size: 150ul , Concentration: 1000 µg/ml by Nanodrop;	GeneID (NCBI): 1160	Recommended Dilutions: WB 1:2000-1:8000 IHC 1:500-1:2000
Source: Rabbit	Full Name: creatine kinase, mitochondrial 2 (sarcomeric)	
Isotype: IgG	Calculated MW: 419 aa, 48 kDa	
Immunogen Catalog Number: AG3971	Observed MW: 41-48 kDa	

Applications

Tested Applications: IHC, WB, ELISA	Positive Controls:
Cited Applications: IHC, WB	WB : mouse heart tissue, human heart tissue, human skeletal muscle tissue, mouse skeletal muscle tissue
Species Specificity: human, mouse, rat	IHC : mouse heart tissue,
Cited Species: human, chicken, mouse	
Note-IHC: suggested antigen retrieval with TE buffer pH 9.0; (*) Alternatively, antigen retrieval may be performed with citrate buffer pH 6.0	

Background Information

Notable Publications

Author	Pubmed ID	Journal	Application
Suzhen Chen	33657393	Cell Metab	WB
Yunlei Li	33451708	Mol Cell Proteomics	WB
Sho Nishikawa	31914311	J Agric Food Chem	WB

Storage

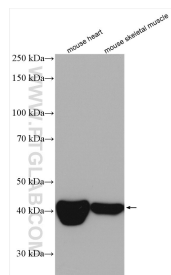
Storage:
Store at -20°C. Stable for one year after shipment.
Storage Buffer:
PBS with 0.02% sodium azide and 50% glycerol pH 7.3.
Aliquoting is unnecessary for -20°C storage

*** 20ul sizes contain 0.1% BSA

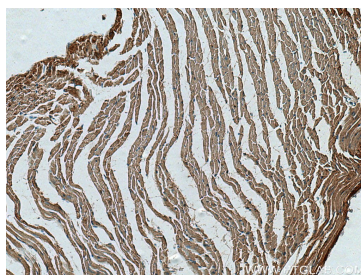
For technical support and original validation data for this product please contact:
T: 1 (888) 4PTGLAB (1-888-478-4522) (toll free in USA), or 1(312) 455-8498 (outside USA)
E: proteintech@ptglab.com
W: ptglab.com

This product is exclusively available under Proteintech Group brand and is not available to purchase from any other manufacturer.

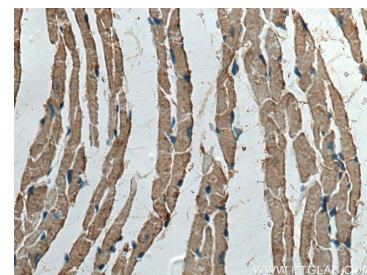
Selected Validation Data



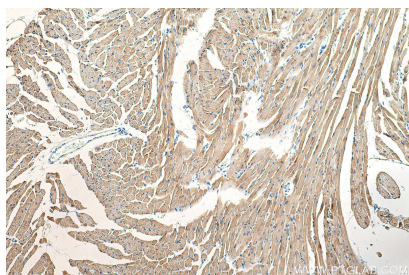
Various lysates were subjected to SDS PAGE followed by western blot with 13207-1-AP (CKMT2 antibody) at dilution of 1:5000 incubated at room temperature for 1.5 hours.



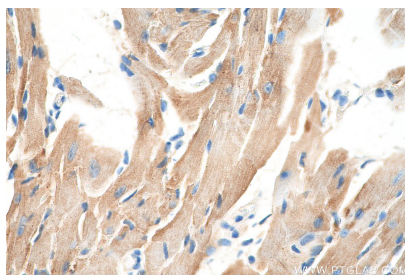
Immunohistochemical analysis of paraffin-embedded mouse heart tissue slide using 13207-1-AP (CKMT2 antibody) at dilution of 1:1000 (under 10x lens). Heat mediated antigen retrieval with Tris-EDTA buffer (pH 9.0).



Immunohistochemical analysis of paraffin-embedded mouse heart tissue slide using 13207-1-AP (CKMT2 antibody) at dilution of 1:1000 (under 40x lens). Heat mediated antigen retrieval with Tris-EDTA buffer (pH 9.0).



Immunohistochemical analysis of paraffin-embedded mouse heart tissue slide using 13207-1-AP (CKMT2 antibody) at dilution of 1:500 (under 10x lens). Heat mediated antigen retrieval with Tris-EDTA buffer (pH 9.0).



Immunohistochemical analysis of paraffin-embedded mouse heart tissue slide using 13207-1-AP (CKMT2 antibody) at dilution of 1:500 (under 40x lens). Heat mediated antigen retrieval with Tris-EDTA buffer (pH 9.0).